

USER MANUAL

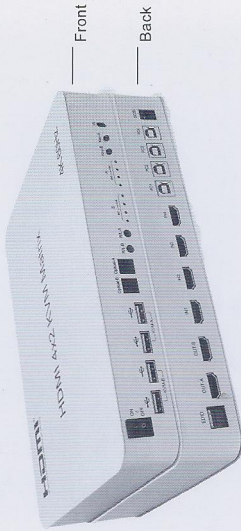
HDMI 4x2 KVM Matrix (4K@60Hz)

Enjoy the vivid world

Introduction :

The HDMI 4x2 KVM matrix can connect 4 HD signal sources to 2 HD display terminals with optical fiber or stereo headphone output. Two sets of mouse and keyboard can control devices on 4 PC ports at will. The matrix allows four HDMI devices to be switched or split easily to two HDMI compatible monitors or projectors. And any output ports can realize independent audio output by optical fiber or stereo headphone.

Our devices offer solutions for noise, space and security concerns, data center control, information distribution, conference room presentation, school and corporate training environments.



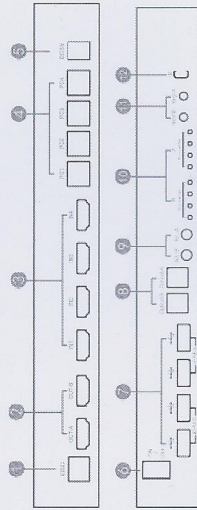
Features :

- * Support HDMI resolution up to 3840*2160/60Hz;
- * Support 3D video format;
- * Support 3 switching modes: IR remote control, button, keyboard hotkeys;
- * Support 4K (input) resolution turn to 2K (output) (Down scaler) ;
- * Support 2 HDMI audio extraction, 3.5mm earphone jack and optical fiber interface output at same time;
- * 4 HDMI inputs switch and split to 2 HDMI displays;
- * Support LPCM/Dolby/DTS 5.1 channel.

Specifications :

HDMI resolution.....	up to 3840*2160/60Hz
Support video format.....	8/10/12 bit deep color
Support audio format.....	LPCM/DTS/Dolby-AC3
Max bandwidth.....	600MHz
Max baud rate.....	3x6Gbps
Input cable distance.....	4K/30Hz ≤15M AWG26 HDMI standard cable
	4K/60Hz ≤5M HDMI 2.0 standard cable
Output cable distance.....	4K/30Hz ≤15M AWG26 HDMI standard cable
	4K/60Hz ≤5M HDMI 2.0 standard cable
Cable length.....	Standard USB 2.0 A male to B male cables 2m
HDMI Input.....	4
HDMI Output.....	2
Max working current.....	800mA
Power adapter format.....	Input: AC (50Hz, 60Hz) 100V-240V; Output: DC5V/1.5A
Operating temperature range.....	5 to 90%RH (-15 to +45 °C)
Operating humidity range.....	5 to 90%RH (No Condensation)
Dimension (L x W x H).....	256x153x33 (mm)
Weight.....	1208g

Function Interface Figure:



- 7. KVM B-A → --- Keyboard and mouse interface;
- 8. Optical B-A --- Optical output;
- 9. R/L B-A --- Stereo output;
- 10. B/A IN1 → 4 --- HDMI input indicator;
- 11. Key_B-A --- HDMI output switching button;
- 12. IR --- IR Receive

EDID setting

Position 1	Position 2	Position 3	Position 4	Function
0	0	0	0	Copy the EDID of HDMI OUT 1
0	0	0	1	Copy the EDID of HDMI OUT 2
0	0	1	0	3D 1080P 2 CH LPCM
0	0	1	1	3D 1080P 5.1 CH (LPCM/Dolby/DTS)
0	1	0	0	2D 1080P 2 CH (LPCM)
0	1	0	1	2D 1080P 5.1 CH (LPCM/Dolby/DTS)
0	1	1	0	3D 4K 2 CH (LPCM)
0	1	1	1	3D 4K 5.1 CH (LPCM/Dolby/DTS)

Noted: the dial switch to dial downward is 1, dial upward is 0.

The Remote Control Instruction :



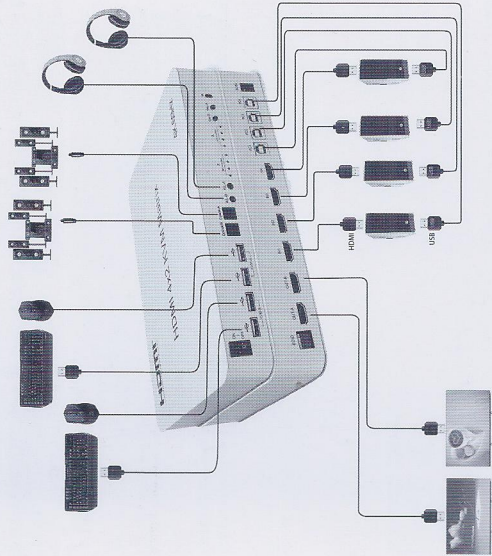
- 1) The four buttons on Output 1 is the corresponding input source IN1-IN4 which out from Output A, IN1-IN4 can be switched freely.
- 2) The four buttons on Output 2 is the corresponding input source IN1-IN4 which out from Output B, IN1-IN4 can be switched freely.

Operating instructions

1. Two sets of mice and keyboards insert to A、B USB port → Use two HDMI cables connect the port 'HDMI OUT' to TV, 4 HDMI cables connect to 4 signal sources → Use USB 2.0 A male to B male cable connect the signal sources USB port to the device PC port → Connect power adaptor, turn on the switch, led light indicates normal operation.

2. Key operation: Switch (A or B) button is use for switch the input signal sources.
3. Keyboard hotkeys: double click 'Ctrl' and press number 1-4 to switch the PC Port. For example: output PC3 on the HDMI B, operation as follows: keyboard and mouse insert to the B → double click Ctrl → press the number 3, then it will switch to the PC3 port.

Connection Diagram :



Application Scenario :



TV Store



Teaching Room



Video Conference

Notes :

Pls use the machine as the instruction listed to keep a long using lifetime of the device.

1. The device should be placed at the spot far from the Damp, High-Temperature, Dusty, Erosive, and oxidative environment.
2. All parts will be free from the strong shake, hit, fall.
3. Touching the power adaptor with the wet hands is prohibited.
4. Pls hold the power adaptor head and do not pull the power cord when cut off from the socket.
5. Pls turn the power off when the device is not used for long time.
6. Pls do not open the cover and do not touch the inside parts.
7. Pls use the original factory power adaptor.

Accessories :

1. HDMI Matrix 4X2 1PCS
2. IR Remote Control 1PCS
3. 5V Power Adaptor 1PCS
4. USB 2.0 A male to B male Cable 4PCS
5. User Manual 1PCS

用户手册

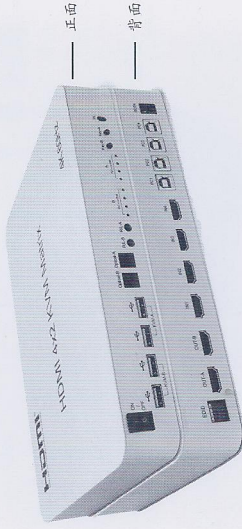
HDMI 4X2 KVM 矩阵 (4K@60Hz)

享受精彩影像世界

产品介绍:

这款 HDMI 4X2 KVM 矩阵可以把四个高清显示信号源与两个高清信号源同时连接起来, 同时可以支持光纤和立体声耳机输出。两套鼠标键盘可以任意控制4个PC端口上的设备; 它可以很容易地将四路高清信号在两个兼容高清信号的显示器或者投影机上的自由切换或者分配, 而且任意一个输出端口都可以通过光纤或者立体声耳机实现音频的独立输出。

HDMI 4X2 KVM矩阵对输入的信号做重整和放大, 通过HDMI线缆做无损传输。本HDMI矩阵提供的解决方案应用于数字高清晰度电视节目、娱乐中心、零售和网站、高清晰度电视、和顶盒、DVD、投影机厂、数据中心控制、信息分布、会议室、学校和企事业单位等环境。



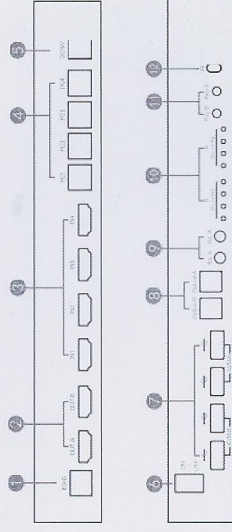
特点:

- * 支持最高分辨率达 3840*2160/60Hz;
- * 支持3D视频格式;
- * 支持3种切换方式: 红外遥控, 按键, 键盘热键;
- * 支持4K (输入) 转2K (输出) (Down scaler);
- * 支持2路HDMI的音频提取, 3.5mm耳机接口和光纤接口同时输出;
- * 四路HDMI信号输入切换并分配到两个HDMI显示器;
- * 支持LPCM/DoIby/DTS 5.1声道提取;

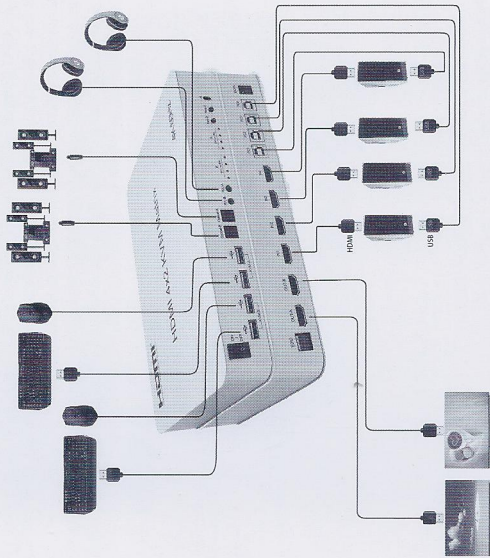
规格:

HDMI 分辨率.....最高支持3840*2160/60Hz
 支持视频格式.....8/10/12位色深
 支持音频格式.....LPCM/DTS/DoIby-AES
 最大带宽传输.....600MHz
 最大传输速率.....3x66bps
 输入线缆长度.....4K/30Hz下≤15米AWG26 HDMI标准线缆;4K/60Hz≤5米标准2.0线缆
 输出线缆长度.....4K/30Hz下≤15米AWG26 HDMI标准线缆;4K/60Hz≤5米标准2.0线缆
 线缆长度.....标准USB 2.0 A公头转B公头连接线≤2米
 HDMI 输入端口.....4个
 HDMI 输出端口.....2个
 最大工作电流.....800mA
 电源适配器规格.....输入: AC (50Hz, 60Hz) 100V-240V, 输出: DC5V/1.5A
 工作温度范围.....(-15 to +45°C)
 工作湿度范围.....5 to 90% RH (无冷凝)
 尺寸 (长*宽*高).....256x153x33 (mm)
 重量.....1208g

产品接口示意图:



连接示意图:

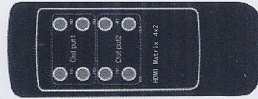


1. EDID 接口
2. OUT_A-B
3. IN1-4
4. PC1-4
5. DC/5V
6. ON/OFF 开关
7. KVM B-A
8. Optical B-A
9. R/L B-A
10. B/A IN1-4
11. Key_B-A
12. IR

DIP EDID 拨码开关说明:

1	2	3	4
0	0	0	0
0	0	0	1
0	0	1	0
0	0	1	1
0	1	0	0
0	1	0	1
0	1	1	0
0	1	1	1
1	0	0	0
1	0	0	1
1	0	1	0
1	0	1	1

遥控器说明:

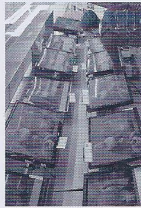


- 1: Out put 1 上面的四个按键对应的是Out-A的输出所连接的输入源, IN1-IN4进行信号源的切换。
- 2: Out put 2 上面的四个按键对应的是Out-B的输出所连接的输入源, IN1-IN4进行信号源的切换。

操作说明:

- 1) 两套鼠标按键插到A、B两组USB接口→2条HDMI OUT 端口线接到显示器设备另外4条接到4个信号源上→USB 2.0 A公头转B公头连接线从PC端口接到信号源的USB端口上→接上述配器电源打开电源开关LED亮工作正常。
- 2) 按键操作: Key (A/B) 按钮用来切换当前输出OUT (A或B) 所对应的输入信号源。
- 3) 键盘热键: 双击 'Ctrl' 后按数字区的1-4就可以切换到相应的PC端口上。如想要HDMI B端口上输出PC3, 操作如下: 把鼠标键盘插到B端口上→双击Ctrl→按数字区的3, 这时就可以切换到PC3端口上了。

应用场景:



电视卖场



多媒体教学



视频会议

注意事项:

- 请正确使用并妥善保养, 以保证产品性能以及正常工作。
1. 要远离潮湿、高温、粉尘、腐蚀性及氧化性气体环境以免损坏。
 2. 所有部件应避免强烈震动, 不得碰撞、敲击、跌落, 以免损坏。
 3. 请勿用湿手接触本机电源适配器插头, 请握住插头, 不要拉电源线。
 4. 从电源插座上拔除适配器插头时, 请握住插头, 不要拉电源线。
 5. 机器不用时请关闭电源 (长期不用时请拔掉电源适配器插头)。
 6. 请勿开启机盖, 切勿接触机内任何器件。
 7. 必须使用厂家提供或经厂家认可的电源适配器。

包裹附件:

1. HDMI 矩阵 4x2 一台
2. 遥控器 一个
3. 电源适配器 一个
4. USB 2.0 A公头转B公头连接线 四条
5. 用户手册 一本