



# Pomona Valley 99ers

TEXAS INSTRUMENTS TI-99/4A HOME COMPUTER

VOL. 10 NO. 12

DECEMBER, 1992

NEXT GENERAL MEETING  
DECEMBER 14 7:00 PM  
PFF - CENTRAL & MORENO

### GROUP OFFICERS

PRESIDENT:	BOB WEBB	(818)	447-9965
VICE PRESIDENT:	DEE TURNER	(909)	881-8879
SECRETARY:	GLORIA ANDERS	(909)	626-6231
TREASURER:	HOWARD McDONALD	(909)	627-4144
PROGRAM CHAIRMAN:	DEE TURNER	(909)	881-8879
DISK LIBRARIAN:	GENE BOHOT	(909)	628-6886
EQUIPMENT CHAIRMAN:	WANDA FERGUSON	(909)	946-1388
MEMBERSHIP CHAIRMAN:	WANDA FERGUSON	(909)	946-1388
NEWSLETTER EDITOR:	HOWARD McDONALD	(909)	627-4144
EXCHANGE LIBRARIAN:	JOY WARNER	(909)	982-9771
RAFFLE CHAIRMAN:	CHARLES HOBBS	(213)	359-3139

\*\*\*\*\*

MEMBERSHIP -- \$15.00 ANNUALLY. NEWSLETTER ONLY -- \$12.00

MEMBERS

Board Meeting will be held at  
DENNY'S  
DEC 23 - 7:30 PM  
CENTRAL & I-60

WELCOME

### COMMERCIAL ADVERTISING RATES:

FULL PAGE --	\$6.00	HALF PAGE --	\$3.50
QUARTER PAGE --	2.50	2" X 3 1/2 --	2.00

CLASSIFIED ADS FREE TO MEMBERS

### PUBLICATION NOTICE

The Pomona Valley 99er's Users Group is not affiliated with or sponsored by Texas Instruments and has no relationship with them, implied or otherwise. We are not affiliated with or sponsored by any other users group. Mention of a company or product is not an endorsement. Members are encouraged to ask questions at the meetings before buying any product. This newsletter is published through the efforts of the staff

to serve the needs of the Pomona Valley 99er's User Group and users of the TI 99/4A. Readers are encouraged to contribute articles for publication. Opinions expressed are those of the writers and not necessarily those of the Pomona Valley 99er's Users Group, it's officers, members or the editor. Information from the newsletter may be reproduced only if credit is given to both the author and this newsletter.

## OVERALL VDP MAPS WITH BASIC AND EDITOR ASSEMBLER

Address	BASIC	Address	EDITOR ASSEMBLER
>0000	SCREEN IMAGE TABLE Start CHAR PATTERN TABLE +96 Offset (>60 Bias)	>0000	SCREEN IMAGE TABLE Default start of Sprite Pattern Table
>02FF	END SREEN IMAGE	>02FF	End of Image
>0300 >031F	COLOR TABLE	>0300	SPRITE ATTRIBUTE TABEL
>0320 >036F	CHARACTER PATTERN TABLE +96 Offset (>60)  >03C0 - >03DF VDP Roll Out  768+8*character number = address in decimal.	>037F	
>03F0 >03F8 >0400 >0408	Character number 30 Charater number 31 Charater number 32 Character number 33 ect	>0380	COLOR TABLE  >03C0 - >03DF VDP Roll Out >03E0 - >045F Value Stack  >0400 = char >80 in sprite pattern
>07FF		>077F	
>0800	PABS (Value Stack) STRINGS SYMBOL TABLES NUMERIC VALUES LINE NUMBER TABLE PROGRAM SPACE	>0780 >07FF	SPRITE MOTION TABLE
>35D7		>0800	CHARACTER PATTERN TABLE Standard Chars at >0900 - >0AFF  Also used for PABs
>35D8		>0FFF	
>3FFF	DISK FILE BUFFERS	>1000	FREE SPACE
		>35D7	Also used for Loader PAB
		>35D8	DISK FILE BUFFERS
		>3FFF	

### D-TAILS by Dee Turner

Time flies when you're having fun. The last contest is bring out the best of our new programmers. One of our newer members is winning all the 1st place awards in the beginner's catagory. Now I hear she is going to enter both beginners and expert catagories for the Christmas contest and will probely win those also. Good Luck Wanda. I hope the discussions about programming have enfluenced more people. If there is a subject that we are not covering at the meeting let us know. I know we have some exciting discussions comming up for the new year. In January we will have Bill Harins demonstrate his newest effort in CAD. If your want to design your dream houses, don't miss the January meeting. The December meeting will finish the contest for the year. The next string of contest will be streached out further apart. So stay tuned. CUL Dee

# How You Might Benefit From Belonging to User Group

Using a computer is often a solitary undertaking, but that doesn't mean that most computer users are an antisocial lot.

Most computer aficionados that I know are outgoing and like to share their experience with others. We do this informally among our friends and co-workers, but there are plenty of user groups where people gather to help each other and share information.

Many of the groups are open to any computer user, while some are formed for a particular company or institution. Most user groups focus on a particular computer "platform," such as the IBM PC or Macintosh. Others are more specific, dedicated to a particular software program.

The size of the groups may range from a few people to hundreds or thousands. The Boston Computer Society, for example, has more than 25,000 members throughout the world. The society, like other large user groups, has lots of special interest groups that focus on particular software, hardware or types of users. The group can be reached at (617) 252-0600.

Most groups publish a regular newsletter and operate a dial-up computer bulletin board where you can exchange electronic mail with members or download public domain and "shareware"

**LAWRENCE J. MAGID** is a Silicon Valley-based computer analyst and writer.

software for your computer. Many groups also sell shareware disks at nominal prices. Users are free to try the shareware and, in most cases, are expected to send the author a "registration fee" if they use the program on a regular basis.

Some groups provide community service, said Judy Brown, president of the Assn. of PC User Groups (APCUG). It's not uncommon, says Brown, for groups to mobilize during emergencies. User groups helped set up databases to coordinate supplies and services during natural or civil disasters, such as the Los Angeles riots or Hurricane Andrew, Brown said. The APCUG represents 300 user groups with more than 300,000 members. There are an estimated 10,000

user groups nationwide when you include internal company groups.

User groups have become a major force in the computer industry, according to a study conducted by Cal State San Bernardino professor Arthur Saltzman. The study, co-sponsored by APCUG, Lotus Development, Intel and IBM, found that members generally have enormous influence on software and hardware buying patterns at their workplaces.

More than 28% of members are either the chairman, president or owner of their company. And about three of four members either recommend or approve hardware and software purchases totaling an average of about \$90,000 a year.

As a group, members tend to be male (87%), educated (nearly 70% have college degrees and 27% have advanced degrees) and relatively affluent (\$63,000 average household income). It's easy for a newcomer to feel lost at a large user group meeting, said Jerry Schneider, past president of the Washington, D.C.-area Capitol PC User Group. "The better user groups," said Schneider, "are learning to attract and maintain new users."

Steve Bass, president of the Pasadena PC Users Group, worries that some newcomers might feel intimidated when they encounter the 350 or so people who attend the monthly meetings. To ease those fears, each meeting has segments for beginners, intermediate and advanced users.

The group also sponsors a special interest group for novices, along with groups that concentrate on spreadsheets, word processing, database and other software.

One way to find a user group in your area is to call the Assn. of PC User Group's locator line (by modem) at (914) 876-6678.

**Computer File welcomes your comments but regrets that the author cannot respond individually to letters. Write to Lawrence J. Magid, P.O. Box 620477, Woodside, Calif. 94062, or contact the L. Magid account on the MCI electronic mail system.**

HAPPY HALLOWEEN



TI FEST WEST "NORTH" '93  
1396 Lincoln Avenue, Apt B  
Ogden, Utah 84404

Gene Bohot  
11824 Butterfield Ave.  
Chino, CA 91710

11 November 1992

Dear Gene,

Your recent letter has been forwarded to me, as I have the package ready for mailing to all the vendors and it provides quite a bit of the answers you need. It just happens that my wife is preparing a similar package to all the 11 99 User Groups. She is the registration chairperson. That may even contain more information as to specific schedules, etc.

The event in Phoenix last year was our first and we had a total of six from the Ogden TI Users Group there. We were all thrilled with what we saw and learned, so it was no wonder we jumped at the chance to host it up here. And I note that you have had that demanding pleasure, too.

The enclosed should help you on Hotel possibilities. Registration will be \$5.00 for the weekend and will be collected at the door at which time your badge will be made up and issued.

We will see to it that you are added to the User Group list so that you will receive any additional information direct, in addition to the Pomona Valley 99ers. They are on our mailing list. We do appreciate the help as we do so want to see this event get bigger each year. In fact, we are so confident of this growth that we have reserved twice the number of rooms at the Howard Johnson, over those reserved at Phoenix last year. And by the way, the Howard Johnson has already sold out all other rooms for that weekend, so if staying there, get your reservation into them early to assure a room.

Sincerely,

*Harold A. Hilburn*  
Harold A Hilburn  
4846 South 2575 West  
Roy, Utah 84067-1704  
Phone (801) 773-0622

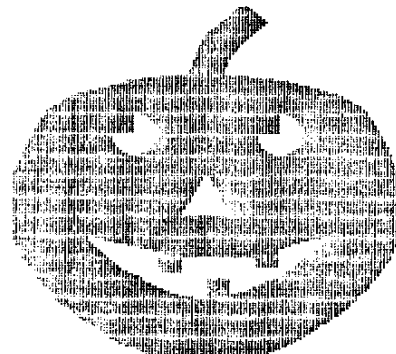
HAPPY HALLOWEEN

POMONA

VALLEY

NINETY

NINERS



TI FEST WEST "NORTH" '93  
SALT LAKE CITY HOTELS (a partial list)

The following five are a short walk distance:

Howard Johnson (Host Hotel), 122 West South Temple  
Rates \$55 single/double, \$65 triple/quad. Airport shuttle.  
Reservation phone = 1 800 654 2000

Red Lion Hotel, 255 South West Temple  
Rates \$69.00 and \$89.00 Deluxe room. Airport shuttle  
Reservation phone = 1 800 547 8010

Marriott Hotel, 75 South West Temple  
Rates \$99.00 single, \$109.00 double. Airport shuttle  
Reservation phone = 1 800 228 9290

Double Tree Hotel, 215 West South Temple  
Rates \$79.00 per day, Airport shuttle  
Reservation phone = 1 800 528 0444

Shilo Inn, West Temple at Second South  
Rates \$63.00 per day. Airport shuttle  
Reservation phone = 1 800 222 2244

The following are a short driving distance:

Quality Inn/Airport, 5575 West Amelia Earhart Drive, and  
Quality Inn/City Center, 154 West 600 South  
Rates \$73.00 both. Airport shuttle  
Reservation phone = 1 800 521 9997

Best Western Olympus Hotel, 161 West 600 South  
Rates \$65.00 single, \$75.00 double. Airport shuttle  
Reservation phone = 1 800 528 1234

Clarion Hotel, 999 South Main Street  
Rates \$74.00 to \$109 Suite. Airport shuttle  
Reservation phone = 1 800 933 9678

Little America Hotel and Towers, 500 South Main Street  
Rates \$59.00 lower to \$99.00 Tower. Airport shuttle  
Reservation phone = in Utah 1 800 662 5888  
other States 1 800 453 9450

Days Inn, 1900 West North Temple  
Rates \$46.00 single, \$51.00 double. Airport shuttle  
Reservation phone = 1 800 325 2525

Airport Hilton, 5151 Wiley Post Way  
Rates \$79.00 single, \$89.00 double. Airport shuttle  
Reservation phone = 1 800 999 3736

Salt Lake Hilton, 150 West 500 South. Airport shuttle  
Rates \$89.00 to \$199.00 single, \$101.00 to \$131.00 double  
Reservation phone = 1 800 999 3736

For those with Campers, Trailers or Motor Homes:

Camper World, 262 East 3900 South. 10 Utah locations  
Reservation phone = (801) 262 8166

Campground V I P, 1350 West North Temple  
Reservation phone = (801) 328 0224

Ideal Trailer Park, 2955 South State Street  
Reservation phone = (801) 487 1922

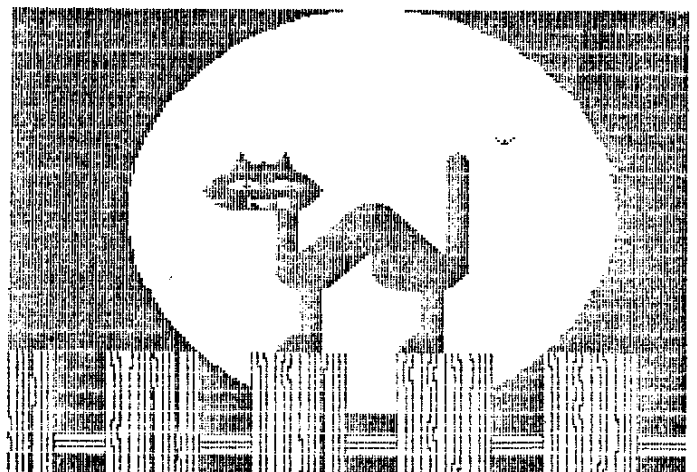
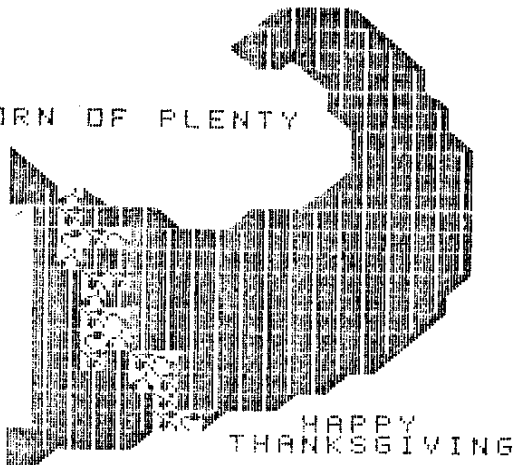
K O A Campground Salt Lake City, 1400 West North Temple  
Reservation phone = (801) 355 1192

We are advised by our Salt Lake City contact that rooms are available at this time at these Hotels, but there will be several other conferences in town in mid February, plus that is the middle of the Ski season. In other words, you should reserve your rooms at the earliest or you'll have to stay far f-a-r away from the TI FEST WEST '93 location. The quoted rates are for the February time frame and should remain valid with early reservations.

Many other hotels and motels are available in the downtown area and in all the areas farther out. An example would be Motel 6, which has four Motels serving Salt Lake City with rates currently below \$30.00 single plus \$6 for each additional person. If you need more listed, please let me know upon your Vendor Registration form and I'll dig deeper and get an update on location, prices and availability.

You may want to come in even earlier for skiing, touring or whatever. Remember, Regina has invited all coming from the south and west to come early, contact her and spend time skiing with her family the week before in the Cedar City area. And then come on up to FEST WEST on the 11th.

THE HORN OF PLENTY



SIDE\*PRINT 3.4 by JIM SWEDLOW

Review by Jim Wanda Ferguson

This article is the first written effort that hasn't gone into a courtroom, be forewarned we're not programmers so anything in this article is from a keyboard operators point of view.

First of all Jim I would like to thank everyone in the club for helping us re-establish a TI system and especially Gene Bohot for numerous Fairware/Shareware programs, and loans of cartridges without which our system would have only been sitting, and for answering all those DUMB questions; "HELP! I FORGOT!" "How do you load a program, which dosen't auto load?"

WARNING: THESE STATEMENTS ARE ON THE DISK LABEL  
IMPORTANT USE PRINT\*DOCS TO PRINT THE DOCUMENTATION DO NOT USE THE TEXT EDITOR OR THE TEXT FORMATTER. THIS DISK MUST BE IN DRIVE # 1!

If you already have files that have been saved for version 3.3 as we do there is no modification to be done to your files, and you'll find

3.4 to be alot more user friendly particularly for people like us who don't know how to change data in programs yet, this program is set up for a number of different printers and will allow you to reset the defaults, parameters, and filenames and then save them directly to the program disk all prompted by instructions in the DOCS and easy screen directions. Lucky for us the disk came already set up for our printer, the Gemini 10X, so it only took about 2 minutes to set up what we needed, and away the printer went. We didn't even have to call Jim or Gene this time, which is an accomplishment in itself.

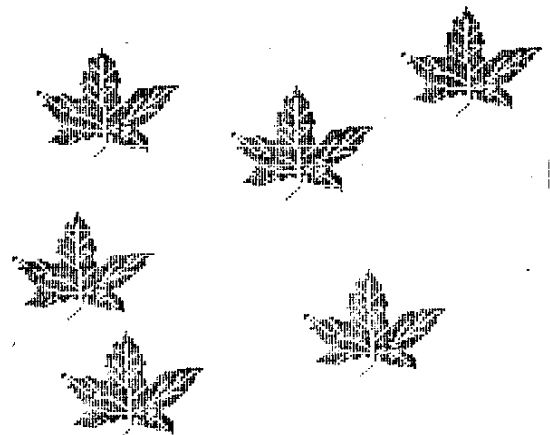
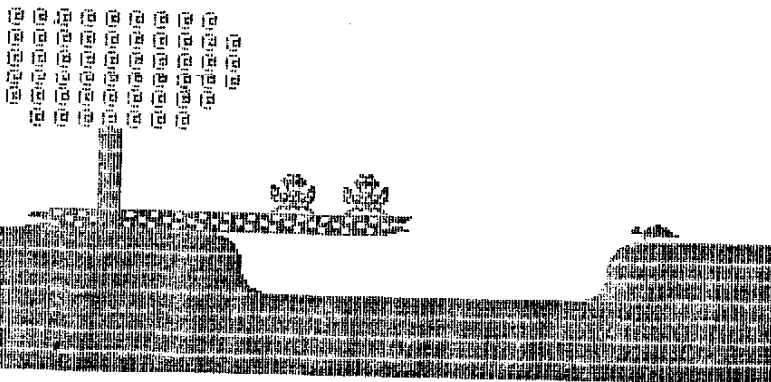
Jim I found the program ran the printer quite a bit faster than the previous version and the expanded letters were quite helpful to me, especially since my puppies decided to use my glasses as chew toys.

Something we haven't tried yet but should be noted is a special section in the DOCS for printing TI Writer/funnelweb files sideways.

EDITORS NOTE: - Thanks to Bill Harms, for his screen dumps of our Halloween and Thanksgiving contests, I am including those that turned out, on pages 3, 4, 6, & 7. Due to problems with a screen dump, you don't always get what you think you should. Also, I don't know the author of each one, but I am certain, each of you will recognize your great work of art. Don't miss the final contest next week. The theme is "Christmas", and we are looking forward to seeing your entry. --- Howard

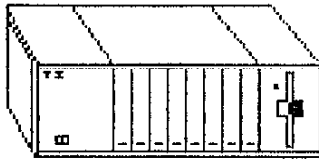
HAPPY  
FROM  
POMONA  
99'ERS!!!

HALLOWEEN!!!!  
THE  
VALLEY

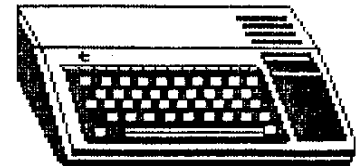


Thanks  giving

# POMONA VALLEY 99ERS



COMPUTER USER GROUP  
FOR THE TI-99/4A COMPUTER



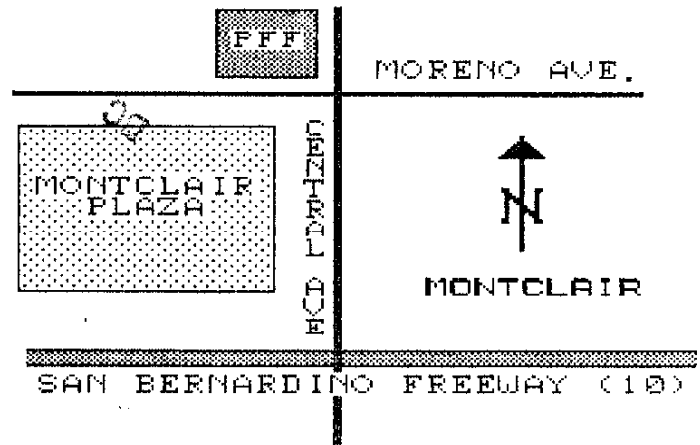
## MEETINGS:

POMONA FIRST FEDERAL S&L  
9090 CENTRAL AVENUE  
MONTECLAIR, CALIFORNIA

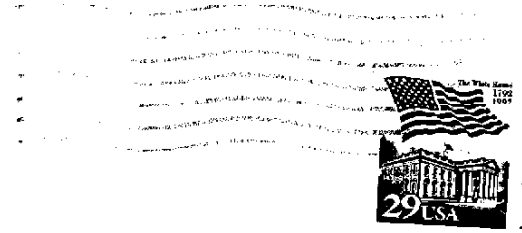
2ND MONDAY OF EACH MONTH  
AT 7:00 P.M.

## FOR INFORMATION CONTACT:

BILL HARMS (714) 628-1334  
GENE BOHOT (714) 628-6886



POMONA VALLEY 99ERS  
COMPUTER USER GROUP  
C/O HOWARD McDONALD, EDITOR  
6880 GLORIA STREET  
CHINO, CA 91710



DALLAS TI HOME COMPUTER GROUP  
LISA SHAFFER  
P.O. BOX 29863  
DALLAS TX 75229

# RV00E