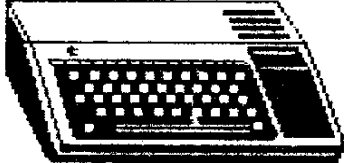
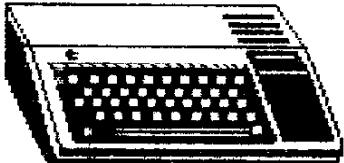


Tom Hall

4

	<p>T. I. C. O.</p> <p>TOPICS</p> <p>EDITED BY JEFF ASENAS VOLUME 5 NUMBER 8</p> <p>Newsletter of the Oxnard Area 99/4a Computer Club</p>	
---	---	---

THE EDITOR'S DESK...

This month I have few words to say because I am going on a much needed vacation to Idaho where I will have nothing to do except lounge around and do nothing except waterski and swim and other lazy activities. I will however take my trusty TI and my modem along. Last summer I made contact with the Northern Nevada 99er's president, Dave Belanger. I hope to meet with him as well as others and perhaps I will get some new items for the library. I also hope to meet with someone in Spokane, Wa. which is two hours away from our cabin and possibly with another TI friend in Seattle on my flight back.

Minutes of the last meeting: We got off to a kind of late start (say about 7:45p.m.). In absence of President Martyn, Steve Mehr started the meeting. There was no old business. There was no new business so on to the program! I showed Page Pro 99 and Mail List 100 and afterwards Steve showed Nuclear 99er (a quite interesting game). Afterwards group members and guests alike conversed and got copies of library disks.

I have no idea what the meeting will be like but I would like someone to fill in for me and take notes (and possibly write an article for the August newsletter which I will be back in time to print.)

SEE YOU IN SEPTEMBER!

***** TICO OFFICERS *****

President.....	Bob Martyn.....	659-4644
Vice President.....	Steve Mehr.....	379-2937
Secretary.....	Jeff Asenas.....	524-0878
Treasurer.....	Richard Parsons.....	646-0554
Disk Librarian.....	Gabriel Asenas.....	524-0878

Meeting is Aug. 2nd - 7:30 pm
at the Red Baron Restaraunt.

FLYING FORWARD THROUGH THE
FLIPPING FLOPPIES...

FIRST OFF, SOME WHERE IN THIS NEWSLETTER YOU WILL FIND AN ARTICLE BY OUR OWN BOB MENDEZ ON A NEW EDUCATIONAL SERIES THAT HE HAS BEEN WORKING ON FOR SOME TIME. HE HAS DONATED A COPY OF THIS SERIES TO THE CLUB LIBRARY. AT THE NEXT MEETING I HOPE THAT WE WILL GET HIM TO GIVE US A PEEK INTO THIS SERIES. THE SERIES WILL BE BROKEN INTO 6 SECTIONS, WITH TWO DISKS OFFERED FOR THE NEXT SIX MONTHS. THE FIRST IN THIS SERIES WILL BE AVAILABLE DURING THE MEETING OR IF YOU LIKE TO ORDER AHEAD, GIVE ME A CALL. I AM PRESENTLY WORKING ON AN EXTENDED BASIC VERSION (BOB'S TRANSLATION IS IN BASIC) OF THE SERIES. JUST ADDING SOME ENHANCEMENTS HERE AND THERE, I'VE HAD A CHANCE TO SEE WHAT THIS THING IS ALL ABOUT. IF YOU HAVE KIDS IN NEED OF HELP WITH THEIR VOCABULARY, THIS IS IT. MORE FROM BOB...

NEW FOR THE LIBRARY, IS A 'FAIRWARE' DISK BY JIM BECK OUT OF ALBERTA, CANADA. THE NAME IS "NINJA". AS THE NAME SAYS, YOU ARE A WARRIOR AND YOUR MISSION IS TO COLLECT AS MUCH GOLD AS POSSIBLE. HOWEVER, THERE ARE OBSTACLES SUCH AS EVIL GUARDS THAT YOU MUST CONTEND WITH AND VARIOUS OTHER SURPRISES ALONG THE WAY. MY YOUNGER KIDS LOVE IT.

ALSO ADDED TO THE LIBRARY IS THE DISK 'MAIL LIST 100'. THIS IS THE PROGRAM THAT WAS DEMOED AT OUR LAST MEETING. THE OTHER DEMO WAS A GAME CALLED 'NUCLEAR 99'.

NEXT IS A PUBLIC DOMAIN DISK FROM THE BOSTON COMPUTER SOCIETY CALLED 'PULSAR'. THESE ARE ASSEMBLY LANGUAGE UTILITIES WRITTEN BY MIKE AMUNDSEN. IT ALLOWS YOU TO WRITE ASSEMBLY LANGUAGE PROGRAMS IN A WAY VERY MUCH LIKE YOU WOULD WRITE A BASIC PROGRAM.

THE LAST DISK FOR MENTION THIS MONTH IS CALLED 'SONATAS FOR PIANOFORTE'. I HAVE NO IDEA WHETHER IT IS PUBLIC DOMAIN, FAIRWARE OR WHAT-EVER. THE DISK CONTAINS 6 SELECTIONS BY J.S. BACH, OPUS #1-6. IF SOMEONE KNOWS ANYTHING ABOUT THIS ONE, WOULD YOU PLEASE LET ME KNOW. THE MUSIC IS REALLY QUITE NICE. ACTUALLY I HAVE HAD TO PUT THE SET ON TWO SSD DISKS BECAUSE OF THE WAY WE HAVE SET UP THE LIBRARY.

ALL THE ABOVE WILL BE IN THE LIBRARY, SO COME ON DOWN AND LET LOOSE WITH SOME OF YOUR HARD-EARNED CASH. **SPECIAL** THIS MONTH AND THIS MONTH ONLY, ANY 2 DISK FROM THE LIBRARY FOR ONLY \$2.00

I WILL BE GONE ON VACATION DURING THE MONTH OF AUGUST, TO MY IN-LAWS CABIN ON PRIEST LAKE IN IDAHO. WE WILL BE TAKING OUR SYSTEM WITH US AND HOPE TO CONTACT SOME PEOPLE IN SPOKANE AND SEATTLE. WE WILL SEE WHAT HAPPENS. I ALSO HOPE TO START USING A PROGRAM CALLED 'BATCH-IT' THAT I HAD PURCHASED FROM STEVE SEVERAL MONTHS AGO. NOW THAT I HAVE PAGE PRO, I WOULD LIKE TO SEE IF I CAN USE BATCH-IT TO HELP OUT WITH CONVERTING SOME FONTS THAT I WOULD LIKE TO USE. I HOPE I DON'T GET FRUSTRATED.

SO UNTIL THEN,

GABRIEL ASENAS, LIBRARIAN

WISDOM LINES
by
Charles Hilley

Multiplan Tutorial-part 2 (continued)

IV. Chapter 1: Fundamentals

F. The Goto Command:

1. Highspeed way in getting around the spreadsheet.
2. Activate by pressing the "G" key.
3. Prompt is displayed.
 - a. "GOTO: Name Row-col Window"
4. Check the illuminated box on the command line.
 - a. Shows status of which command is active.
 - b. Can be changed by typing an "N" for Name, "R" for Row-column, and "W" for Window.
 1. Names and Windows will be discussed later.
 - c. Row-column command
 1. When this is selected, the prompt line shows: "GOTO row: () column: (), with "Enter a number" displayed on the monitor a few lines below the message line.
 2. Use the TAB key (CTRL A) to change to the second field, column.
 - d. Be sure to press ENTER after the cell addresses are entered.
6. Command Selection From Menus:
 1. Type the first letter in each command displayed on the monitor.
 - a. "C" for Copy.
 2. A secondary menu displays the function of the command selected.
 - b. "COPY: Right Down From".
 3. Use Cancel (CTRL C) to abort command selected.
 4. Alternate method of command

selection:

- a. Use SPACE BAR to move the cursor (highlight) from left to right.
 - b. For right to left movement, use BACKSPACE (FCTN-9).
 1. On Rave Keyboards
 - a. Use "ALT" key for "FCTN".
- H. Multiplan Proposed Responses:
1. Two types
 - a. Entry Field
 1. A blank field
 2. A typed-in response
 - b. Menu Field
 1. Highlight
 2. Parentheses
 2. Purpose
 - a. Reflect current settings, positions, and name of the worksheet that is being currently used.
 1. If agree with settings:
 - a. Press ENTER
 2. If not:
 - a. Use TAB (CTRL A) to move to desired response.
 3. Use procedures detailed in section 6 regarding to cursor movement.
- I. Filling In The Command Line: The Tab Key
1. The command line is divided into as many fields as there are choices to be made.
 - a. Edit cursor shows which field is active.
 2. Use TAB key to move from field to field.
 3. Refer to message line for related information on the specific field in question.
- J. Carrying Out A Command: The Enter Key
1. Must press ENTER to carry out command, otherwise Multiplan just waits patiently.
- K. Cancelling A Command: The Cancel Key
1. Use (CTRL C) to abort

- command.
- L. Assistance With A Command:
The "Hellp"(Help) Key
1. Select a command of your choice.
 - a. DO NOT PRESS "ENTER"!
 2. Press HELP (FCTN I)
 - a. The "?" key.
 3. On Rave Keyboards:
 - a. Refer to page M-1 in the RAVE manual for keyboard layout and presses.
 4. HELP screen is then displayed.
 5. Subcommands available:
 - a. "C" for Commands
 1. Beginning of Command Overview is displayed.
 - b. "N" for Next
 1. Rest of Command Overview is shown.
 - c. "R" for Resume
 1. Worksheet is redisplayed, with no changes made.
 6. Information on "HELP" can be

accessed by pressing "H" at the main command menu.

- a. Keyboard presses for the TI keyboard can be found by pressing "H" at the main command menu, and then press "K" for keyboard.

M. The Quit (Q) Command

1. Since there is nothing to save before quitting, select Quit by pressing "Q".
2. The command line then asks for a confirmation.
 - a. Typing "Y" for yes erases the screen, and returns the user to the main title screen.
3. Saving techniques will appear later in future installments.

Bye for now!

Next time: Chapter 2 - Building A Worksheet.

The "Key's" Series by Robert F. Mendez

(editor's note: This article describes some new educational disks that the author will be putting into our library soon!)

Originally the idea to put the key series into a computer program started about 1979. The same year I got it from a book written by a female high school english teacher. Once I made up my mind on which computer to buy, I searched for the right program to put the words into. After searching I found the "VOCAB" program from Dilithium Press was the best I could find.

The series started with not more than 20 words in each program. A beginner should be encourage to run each program in sequence. First they start fairly easy, but as time goes on the difficulty level becomes harder. After KEY100 the rest of the programs will be hard.

I would recommend not using more than 2 disks at a time. To do so would give the user of the programs a big headache. If you get 70% on the first attempt keep going to the next key. Usually I can't get 70% so I usually try it again. If I repeated it I can usually get 80% or more. The series explains the words found in the SAT tests.

It will become apparent what the series is all about until KEY210. From then on having conquered the first series the rest of the series will be clear sailing.

With a firm background in greek and Latin words a person will be able to recognize thousands of words.



the CRACKER BARREL
by Chick De Marti Vol 2-7

SPICE UP YOUR PROGRAMS

Start by creating a merge file.

This is not new by any means, Jim Peterson has an elaborate system, but for the do-it-yourselfers, they is a good way to start.

In the LA 99er library, I have a program called PROG/START. Nothing fancy, just a set of routines I am most likely to use anytime I start writing a program. The routines are CALL SCROLL, CALL WIPE, CALL PAUSE, CALL CENTER, and CALL END.

You will notice the line numbers are high enough to be merged into any program you have. And remember, these are UP-gradable. Use your imagination and have fun.

```
10000 CALL CENTER
10005 ! ---center a line of
text...used CALL CENTER(R,MS
G$) ! note: r=row
10010 ! -----
10015 C=(32-LEN(MSG$))/2
10020 DISPLAY AT(R,C):MSG$
10025 SUBEND
10050 CALL SCROLL
10055 ! --scroll text across
the screen, used CALL SCROLL
(R,C,MSG$)
10060 ! -----
10065 FOR I=C TO LEN(MSG$)
10070 CALL HCHAR(R,I,ASC(SEG
$(MSG$,I,1)))
10075 NEXT I
10080 SUBEND
10100 CALL PAUSE
10105 ! --- a press any key
routine, used CALL PAUSE
10110 ! -----
10115 FOR I=1 TO 6
10120 DISPLAY AT(24,1):"Pre
ss <ANY> key when ready"
10125 FOR DX=1 TO 100 :: NE
XT DX
10130 DISPLAY AT(24,8)SIZE(
3):" "
10135 FOR DX=1 TO 100 :: NE
```

< Cracker Barrel continues >

```
XT DX
10140 DISPLAY AT(24,8)(SIZE(
3):"ANY"
10145 NEXT I
10150 CALL K
10155 SUBEND
10160 SUB K
10165 ! --call key routine--
10170 CALL KEY(0,K,S):: IF S
=0 THEN 10170
10175 SUBEND
```

Here is a short program to demo our new routines.

```
10 CALL CLEAR :: MSG$="DEMO
PROGRAM" :: CALL CENTER(5,MS
G$)
20 MSG$="THIS IS A SCROLLING
LINE" :: C=(32-LEN(MSG$))/2
30 CALL SCROLL(12,MSG$)
40 CALL PAUSE
50 CALL CLEAR :: END
```

One last thought, if you have a memory like mine, you'll appreciate the use of CALL routines instead of GOSUB to ?. When you are through entering the routines (and have tested them) save it in merge format:

```
SAVE "DSK1.PROG/START",MERGE
```

Weather you are working on a program or just starting with a blank screen just enter:

```
MERGE "DSK1.PROG/START"
```

and you are in business. In my next session I will give you some others you might find interesting and/or helpful.

~~~~~

Questions, questions !

Was Robin Hood's mother called...  
Mother Hood?  
Why does sour cream have an expiration  
Date on it?

## A BRIEF HISTORY OF TIME

I'm not sure what this has to do with computers, but I thought it was a fascinating book, and I DID borrow it from a member of the LA 99ers.

"A Brief History Of Time" written by Stephen W.Hawking, is a book for layman explaining the creation of the universe. But it is written in some foreign language. He speaks of "... a blue quark has to be joined by a 'string' of gluons" or "...past and future light cones (and) four dimensional space-time" Huh??

But at last, my interest was piqued when he explained ... "The Black Hole"

- \* "The gravitational field of a star changes the paths of light rays in space-time.
- \* Light can be bent (inward) toward the force of the gravity affecting it.
- \* When a star has shrunk to a certain critical radius, the gravitational field at the surface becomes so strong that light is bent inward and can no longer escape.

RESULT: A powerful star from which nothing can escape... since nothing can travel faster than the speed of light (Theory of relativity) and if light cannot escape, nothing else can either.

### POSSIBLE SCENARIOS

An astronaut on the surface of a collapsing star...send a signal every second, according to his watch on the surface, to a spaceship orbiting the star. Let's say that at 11 sharp, the star will shrink below the critical radius...(where gravity is so strong that) nothing can escape it, therefore his signals will no longer reach the space ship.

aboard the space ship, at 11:59:59 his signal ceases to reach the ship. The Capt. looks out one of the ports and notes the star seems to be fading (since light cannot leave the star).. suddenly, it disappears!!

And what of our astronaut on the

fading star? Unfortunately, he too would be affected by the inward pull of the gravitational forces as the star reached the critical mass, he too being part of the critical mass, would also collapse (implode) and... "simply disappear".

Why wouldn't the space ship circling the star be affected by these events? "Any observer who remained outside the black hole would not be affected by this ... because neither light nor any other signal could reach (it).

~~~~~

WHAT'S NEW DEPT.

Some drug stores have a "common Ailment" self diagnosing computer program developed by Professor Paul Doering of University of Florida's Center for Computer Appliances in Pharmacy. It requires the customer to enter their age, sex, weight, medical background and current condition. The computer will print a list of recommended medications, complete with product warnings. The program will identify only products that have ONLY the medication the patient needs, avoiding products such as multisymptom cold relievers which contain remedies for as many as 12 symptoms.

NOTE: If you list you've had your cold for more than 10 days, it will recommend that you see your physician

~~~~~

## SOUNDS OF THE DEEP

(Thanx TISUG - Australia)

```
10 FOR R=1 TO 5
20 FOR X=1 TO 30
30 CALL SOUND(-1000,262,X)
40 CALL SOUND(-1000,197,X)
50 CALL SOUND(-1000,111,X)
60 NEXT X
70 NEXT R
```

I'm out of coffee,  
See you next month

\*- - C H I C K - -\*

MOONMINE MODULE (from B.C. 99er Users Group April, 1989)

Q: How do you pick up objects - eg. water?

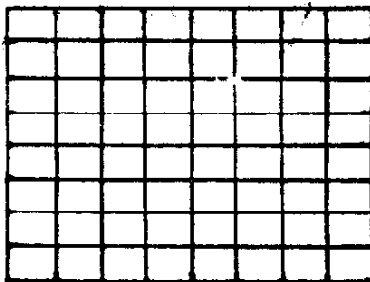
A: When the object appears at the bottom of the screen, hit SPACE. See that newlittle man? Walk him over to the object and press FIRE and he'll pick it up! To return to the ship you must first destroy that monster lurking on the screen. (ED. note.. Thank You B.C. 99ers)

UPDATE ON ZENO BOARD.... I'm told that I'll have a Zeno Board to check out by July. (Give or take) Eric has been working very hard on this, and has received quite a bit of support for this project, at least in the form of letters of interest. He cannot afford to respond with updates till it has reached the final stages, since this then would require several letters to each of the nearly 200 inquiries. This could cost at least \$50. for each additional mailings. Eric can put his money to better use for the completion of the project, and then mailing the update to those who have sent S.A.S.E. to him. He is not expecting to make any money above his cost on this project. It is looking good, and I hope to be able to report to you in the July newsletter that the project is completed and deliverable.

MULTI-FUNCTION PROJECT for the PROTO-BOARD provided by Russel L. Norman I recently received a schematic, parts list and some brief detail on the construction of a Multi-function card for the TI P.E.B.. The card has on it 32K of Expansion memory, a Real-Time Clock, and up to eight Super Cart spaces, selected by a BCD Rotary switch. You may receive your copy by sending a S.A.S.E. and \$.50 in postage to: John F. Willforth, R.D. #1 Box 73A, Jeannette, PA 15644 U.S.A. If outside USA or CANADA, don't send the postage, but send U.S. equivalent to \$1.00.

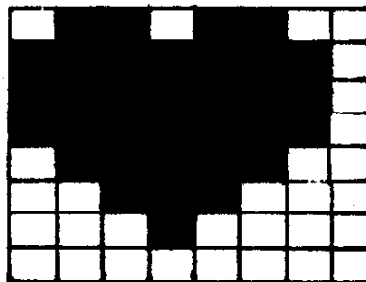
[redacted] of the Dallas Home Computer Users Group, writing in the May, 1989 issue of the Dallas 99 Interface, shows us how to create a HEART in T.I.-WRITER, using the Transliterate Command. He credits a Micropendium review of a disk called PLUS! by Jack Sughrue for the material for his offering. You can use the information to redefine nearly any unused characters as a representative in the transliterate command definition. For example a "+" will be used to generate a HEART anytime the following is entered with the TI-WRITER editor and then printed with the formatter.

DRAW A MATRIX

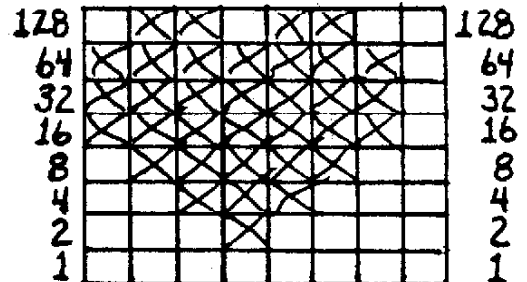


128  
64  
32  
16  
8  
4  
2  
1

DRAW A HEART



COUNT THE NUMBERS



1 2 2 1 2 2 1  
1/2 4 5 1/2 2 4 1/2  
2 8 6 6 2 8 2

Now in the TI WRITER (EDITOR) do the following Transliterate Command:  
>.TL 43:27,75,7,0,112,248,252,126,252,248,112  
>.TL 43:27,75,7,0, sets up the key. The rest is from the drawing above. Of course 43 is the plus "+" sign, so put a plus where you want a HEART and the Formatter will print a heart where ever a "+" appears in the text. This will only work if you run the text through the Formatter!

Thank You Tom for reminding us of the power of the TI and TI-WRITER!

THANKS TO WEST PENN 99 FOR  
THE ABOVE.  
ED.TOR

This month's meeting is August 2nd  
at the Red Baron Restaraunt in  
Oxnard at 7:30 P.M. Sharp!  
Come early and treat yourself to a  
delicious dinner.

DC

TICO TOPICS  
Editor: Jeff Asenas  
326 GLEN WAY  
Fillmore, CA 93015



FIRST CLASS MAIL

Dallas TI Home Computer Group  
P.O. Box 29863  
Dallas, TX 75229

Postage and Fees: P. ENCL. C. COLLECTION REQUESTED