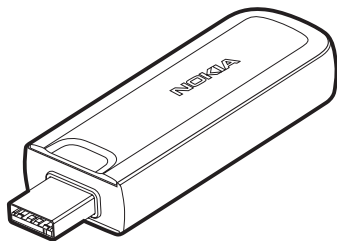


Nokia Internet Stick CS-15

Quick Start Guide



9216662
Issue 1 EN

DECLARATION OF CONFORMITY

Hereby, NOKIA CORPORATION declares that this RD-10 product is in compliance with the essential requirements and other relevant provisions of Directive 1999/5/EC. A copy of the Declaration of Conformity can be found at http://www.nokia.com/phones/declaration_of_conformity/.

CE 0682

© 2009 Nokia. All rights reserved.

Nokia, Nokia Connecting People and Nokia Original Accessories logo are trademarks or registered trademarks of Nokia Corporation. Other product and company names mentioned herein may be trademarks or tradenames of their respective owners.

Reproduction, transfer, distribution, or storage of part or all of the contents in this document in any form without the prior written permission of Nokia is prohibited.

Nokia operates a policy of ongoing development. Nokia reserves the right to make changes and improvements to any of the products described in this document without prior notice.

TO THE MAXIMUM EXTENT PERMITTED BY APPLICABLE LAW, UNDER NO CIRCUMSTANCES SHALL NOKIA OR ANY OF ITS LICENSORS BE RESPONSIBLE FOR ANY LOSS OF DATA OR INCOME OR ANY SPECIAL, INCIDENTAL, CONSEQUENTIAL OR INDIRECT DAMAGES HOWSOEVER CAUSED.

THE CONTENTS OF THIS DOCUMENT ARE PROVIDED "AS IS". EXCEPT AS REQUIRED BY APPLICABLE LAW, NO WARRANTIES OF ANY KIND, EITHER EXPRESS OR IMPLIED, INCLUDING, BUT NOT LIMITED TO, THE IMPLIED WARRANTIES OF MERCHANTABILITY AND FITNESS FOR A PARTICULAR PURPOSE, ARE MADE IN RELATION TO THE ACCURACY, RELIABILITY OR CONTENTS OF THIS DOCUMENT. NOKIA RESERVES THE RIGHT TO REVISE THIS DOCUMENT OR WITHDRAW IT AT ANY TIME WITHOUT PRIOR NOTICE.

The availability of particular products and applications and services for these products may vary by region. Please check with your Nokia dealer for details, and availability of language options.

Export controls

This device may contain commodities, technology or software subject to export laws and regulations from the US and other countries. Diversion contrary to law is prohibited.

9216662/Issue 1 EN

Contents

SAFETY	5	Indicator light for a network connection	15
1. Introduction	7	Attach a strap	15
Read the user guide for the Nokia			
Internet Modem application.....	8	3. Set up a connection	16
Supported hardware and software ...	8	Microsoft Windows XP or	
		Microsoft Windows Vista.....	16
2. Get started	9	Apple Mac OS 10.4 or newer	17
Parts.....	9	Edit and manage connection	
Antenna locations.....	9	settings.....	18
Insert the SIM card.....	10	View details about previous	
First time setup.....	11	connections.....	19
Microsoft Windows XP or		Care and maintenance	20
Microsoft Windows Vista.....	11	Additional safety	
Apple Mac OS 10.4 or newer	13	information	22

SAFETY

Read these simple guidelines. Not following them may be dangerous or illegal. Read the complete user guide for further information.



SWITCH ON SAFELY

Do not switch the device on when wireless phone use is prohibited or when it may cause interference or danger.



INTERFERENCE

All wireless devices may be susceptible to interference, which could affect performance.



SWITCH OFF IN RESTRICTED AREAS

Follow any restrictions. Switch the device off in aircraft, near medical equipment, fuel, chemicals, or blasting areas.



QUALIFIED SERVICE

Only qualified personnel may repair this product.



WATER-RESISTANCE

Your device is not water-resistant. Keep it dry.

■ About your device

The wireless device described in this guide is approved for use on the GSM 850, 900, 1800, and 1900, and UMTS 900 and 2100 networks. Contact your service provider for more information about networks.

S A F E T Y

During extended operation, such as a high speed data connection, the device may feel warm. In most cases, this condition is normal. If you suspect the device is not working properly, take it to the nearest authorised service facility.

When connecting to any other device, read its user guide for detailed safety instructions. Do not connect incompatible products.

■ Network services

To use the device you must have service from a wireless service provider. Many of the features require special network features. These features are not available on all networks; other networks may require that you make specific arrangements with your service provider before you can use the network services. Using network services involves transmission of data. Check with your service provider for details about fees in your home network and when roaming in other networks. Your service provider can give you instructions and explain what charges will apply. Some networks may have limitations that affect how you can use network services.

1. Introduction

The Nokia Internet Stick CS-15 is a wireless modem that lets you transfer data in cellular networks.

To use the device with your computer, you need the Nokia Internet Modem application that is automatically installed when you connect the device to the computer for the first time.

When the device is connected to a compatible computer and a cellular network, you can, for example, browse web pages, use e-mail, transfer files, or stream videos.

Read this guide carefully before using the device. Also read the user guides for the Nokia Internet Modem application, your computer, operating system, and any software that you use with the internet connection set up through the device.

For the latest guides, additional information, downloads, and services related to your Nokia product, see www.nokia.com/support or your local Nokia website.

This product may contain small parts. Keep them out of the reach of small children.

The surface of this device is nickel-free. The metal parts of the carrying strap may contain a small amount of nickel. Persons who are sensitised to nickel may have symptoms from prolonged contact with the metal parts of the carrying strap.

■ Read the user guide for the Nokia Internet Modem application

To read the user guide for the Windows version of the Nokia Internet Modem application, you must have a PDF reader application installed on your computer. You can download the application, for example, from the Adobe website.

To access the user guide, select *Help* in the main view of the Nokia Internet Modem application. The user guide is displayed in the language that you selected during the installation of the application.

■ Supported hardware and software

The USB plug on the device supports the data transfer rates defined in the USB specification version 2.0.

To use the device for data transfer with your computer, the computer must have a 500 MHz 32-bit (x86) or 64-bit (x64) processor or faster, a compatible USB port, and 350 megabytes of free space on the hard disk. You also need one of the following operating systems: Microsoft Windows XP (Service Pack 2 with Hotfix KB943198, or Service Pack 3 or newer) or Microsoft Windows Vista, or Apple Mac OS 10.4 or newer.

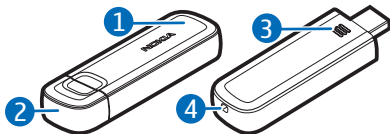
Microsoft Windows XP 64-bit Edition is not supported.

2. Get started

■ Parts

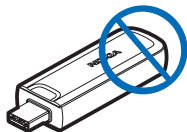
The device contains the following parts:

1. Indicator light
2. USB plug, covered with a protection cap
3. Back cover
4. Eyelet for a carrying strap



Antenna locations

Your device has internal antennas. As with any radio transmitting device, avoid touching the antenna area unnecessarily while the antenna is transmitting or receiving. Contact with such an antenna affects the communication quality and may cause the device to operate at a higher power level than otherwise needed and may reduce the computer battery life.

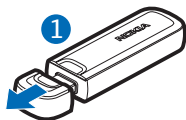


■ Insert the SIM card



Note: The device does not support 5-volt SIM cards.

1. To remove the protection cap, pull it out from the USB plug (1).

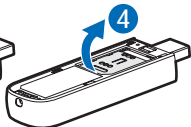
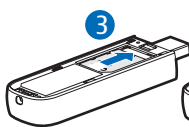


Warning: Keep the cap out of the reach of small children.

2. To remove the back cover, slide it toward the USB plug (2), and lift it.



3. Slide the SIM card holder toward the USB plug (3), and swing it open (4).

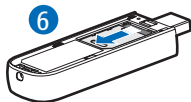


4. Place the SIM card into the slot (5).

Ensure that the gold-coloured contact area on the card is facing down, and the bevelled corner faces toward the eyelet.



5. Swing the holder back in place, and slide it toward the eyelet to close it (6).
6. To replace the back cover, slide it toward the eyelet until it locks into place (7).



■ First time setup

To set up the device for your computer, you may need the administrator rights for the operating system. You may also need to change the firewall settings of your operating system to let the device access the internet.

Microsoft Windows XP or Microsoft Windows Vista

If you have a supported version of the Microsoft Windows operating system (see "Supported hardware and software", p. 8), do as follows:

1. Ensure that a SIM card is inserted in the device.
2. Remove the protection cap from the USB plug.
3. Switch on your computer, and connect the device to the USB port on the computer so that the Nokia logo is facing up.



Tip: The device can also be connected to a compatible computer using the Nokia Connectivity Cable CA-150D. Connect one end of the cable to the USB plug and the other end to the USB port on the computer.

If you have enabled the autorun feature in Windows, the device installs the Nokia Internet Modem application and the needed drivers on the computer. When the operating system finds the device, let it install the device software automatically. The installation may take several minutes.

4. When prompted, select the desired language from the list and *OK*. Follow the displayed instructions.

When prompted, carefully read through the end-user licence agreement. To accept the agreement and use the device, select the box and *Next >*.

5. Based on your SIM card, the device automatically tries to define the settings for the cellular network of your service provider (operator).

The device includes predefined settings for many service providers. If the device cannot detect your service provider, you can define the settings manually in the Nokia Internet Modem application. For details, see the user guide for the application.

6. When prompted, enter the personal identification number (PIN) code or the universal personal identification number (UPIN) of your SIM card. The main view of the Nokia Internet Modem application is displayed.

The (U)PIN code helps to protect your SIM card and is usually supplied with the card.

7. To exit the Nokia Internet Modem application, click the application icon in the Windows system tray, and select *Exit*.

8. To disconnect the device from the computer, unplug the device from the USB port. You may need to stop the device in the operating system before disconnecting it. For details, see the user guide of your operating system.

To connect to the internet, see "Set up a connection", p. 16.

To define settings related to the device (such as the PIN code request), network connections, and the Nokia Internet Modem application, select [Help](#) in the main view of the application.

Apple Mac OS 10.4 or newer

If you have Apple Mac OS 10.4 or newer, do as follows:

1. Ensure that a SIM card is inserted in the device.
2. Remove the protection cap from the USB plug.
3. Switch on your computer, and connect the device to the USB port on the computer so that the Nokia logo is facing up.



Tip: The device can also be connected to a compatible computer using the Nokia Connectivity Cable CA-150D. Connect one end of the cable to the USB plug and the other end to the USB port on the computer.

4. Double-click the Nokia Internet Stick CS-15 setup icon that is displayed in the desktop, and double-click the Nokia Internet Modem icon.

The installer opens and installs the Nokia Internet Modem application and the needed drivers on the computer. Follow the displayed instructions. The installation may take several minutes.

When prompted, carefully read through the end-user licence agreement and accept it if you want to use the application and the device.

5. When prompted, click the detect button so that the installer can recognise the device and SIM card. Based on the SIM card, the device automatically tries to define the settings for the cellular network of your service provider (operator).

The device includes predefined settings for many service providers. If the device cannot detect your service provider, you can define the settings manually. See "Edit and manage connection settings", p. 18.

6. When the Nokia Internet Modem application opens, enter the personal identification number (PIN) code or the universal personal identification number (UPIN) of your SIM card when prompted.

The code helps to protect your SIM card and is usually supplied with the card.

7. To exit the application, click the red button.
8. To disconnect the device from the computer, unplug the device from the USB port after exiting the application.

To connect to the internet, see "Set up a connection", p. 16.

If you want to uninstall the Nokia Internet Modem application, click the uninstall icon in the Nokia folder.

■ Indicator light for a network connection

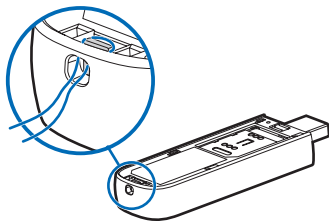
If the indicator light is red, the device cannot register to a cellular network because the SIM card is not valid or properly inserted. Check that the SIM card is valid and properly in place. If the red light flashes, the device is not registered to a cellular network because you have not entered the PIN or UPIN code, if the PIN code request is enabled in the Nokia Internet Modem application (available only in the Windows version).

If the indicator light is green, the device is registered to a GSM network and transferring data. If the green light flashes, the device is registered to a GSM network but the data connection is not active.

If the indicator light is blue, the device is registered to a UMTS network and is transferring data. If the blue light flashes, the device is registered to a UMTS network but the data connection is not active.

■ Attach a strap

1. Remove the protection cap and the back cover. For details, see "Insert the SIM card", p. 10.
2. Thread a strap through the hole at the top of the device so that the loop runs around the small pin. Tighten the strap.
3. Replace the back cover.



3. Set up a connection

For the availability of data services, pricing, and tariffs, contact your service provider.

■ Microsoft Windows XP or Microsoft Windows Vista

To connect to the internet if you have a supported version of the Microsoft Windows operating system (see "Supported hardware and software", p. 8):


1. When a SIM card is inserted in the device, switch on the computer, and connect the device to the computer.

If the Nokia Internet Modem application does not open automatically, start the application in the normal way in your operating system (for example, in Microsoft Windows XP, select Start > Programs > Nokia Internet Modem > Nokia Internet Modem).


2. If prompted, enter the PIN or UPIN code of your SIM card.

The main view of the Nokia Internet Modem application is displayed.

3. Check the network indicator light to see whether a network connection is available. For details, see "Indicator light for a network connection", p. 15.

4. To connect to the internet using the default connection profile, in the Nokia Internet Modem application, select . Start using the connection with the software you want.

If the computer enters standby or hibernation mode, data transfer may stop. Using the device for data transfer increases the demand on computer battery power and reduces the battery life.

5. To view details about the connection, select *Statistics* in the pop-up window that is displayed during data transfer.
6. To end the connection, select  in the Nokia Internet Modem application or *Disconnect* in the pop-up window.

To exit the Nokia Internet Modem application, click the application icon in the Windows system tray, and select *Exit*.

■ Apple Mac OS 10.4 or newer

To connect to the internet if you have Apple Mac OS 10.4 or newer:

1. When a SIM card is inserted in the device, switch on the computer, and connect the device to the computer.

If the Nokia Internet Modem application does not open automatically, select the application from the Finder, or select the Nokia folder and Nokia Internet Modem.

2. If prompted, enter the PIN or UPIN code of your SIM card.

The main view of the Nokia Internet Modem application is displayed.

Set up a connection

3. Check the network indicator light to see whether a network connection is available. For details, see "Indicator light for a network connection", p. 15.


4. To connect to the internet, click the connect button. Start using the connection with the software you want.

If the computer enters standby or hibernation mode, data transfer may stop. Using the device for data transfer increases the demand on computer battery power and reduces the battery life.

The amount of data sent and received during the current session is shown during data transfer.

5. To end the connection, click the disconnect button.

To exit the Nokia Internet Modem application, click the red button.

To minimise the application without ending the active connection, select . To open the application window, click the application icon at the bottom of the screen.

Edit and manage connection settings

The connection settings are grouped in operator profiles. To edit or add a profile or manage the profiles, click the wheel icon in the main view of the Nokia Internet Modem application, and select the desired option. Follow the displayed instructions. For the correct settings, contact your service provider.

View details about previous connections

To view information about previous connections, click the clock icon in the main view of the Nokia Internet Modem application. To delete the entire history, click the clear button. To save the history as a file on your computer, click the export button.

Care and maintenance

Your device is a product of superior design and craftsmanship and should be treated with care. The following suggestions will help you protect your warranty coverage.

- Keep the device dry. Precipitation, humidity, and all types of liquids or moisture can contain minerals that will corrode electronic circuits. If your device does get wet, allow it to dry completely.
- Do not use or store the device in dusty, dirty areas. Its moving parts and electronic components can be damaged.
- Do not store the device in hot areas. High temperatures can shorten the life of electronic devices and warp or melt certain plastics.
- Do not store the device in cold areas. When the device returns to its normal temperature, moisture can form inside the device and damage electronic circuit boards.
- Do not attempt to open the device other than as instructed in this guide.
- Do not drop, knock, or shake the device. Rough handling can break internal circuit boards and fine mechanics.
- Do not use harsh chemicals, cleaning solvents, or strong detergents to clean the device.
- Do not paint the device. Paint can clog the moving parts and prevent proper operation.

These suggestions apply equally to your device or any accessory. If any device is not working properly, take it to the nearest authorised service facility for service.



Recycle

The crossed-out wheeled-bin symbol on your product, battery, literature, or packaging reminds you that all electrical and electronic products, batteries, and accumulators must be taken to separate collection at the end of their working life. This requirement applies in the European Union. Do not dispose of these products as unsorted municipal waste. For more environmental information, see the product Eco-Declarations at www.nokia.com/environment.

Always return your used electronic products, batteries, and packaging materials to a dedicated collection point. This way you help prevent uncontrolled waste disposal and promote the recycling of materials. More detailed information is available from the product retailer, local waste authorities, national producer responsibility organisations, or your local Nokia representative. Check how to recycle your Nokia products at www.nokia.com/wecycle, or if browsing on a mobile device, www.nokia.mobi/wecycle.

Additional safety information

■ Small children

Your device and its accessories may contain small parts. Keep them out of the reach of small children.

■ Operating environment

This device has been tested and meets RF exposure guidelines when plugged directly into a USB port on the host device or when used at the end of the Nokia Connectivity Cable CA-150D supplied in the sales package.

■ Medical devices

Operation of any radio transmitting equipment, including wireless phones, may interfere with the functionality of inadequately protected medical devices. Consult a physician or the manufacturer of the medical device to determine if they are adequately shielded from external RF energy or if you have any questions. Switch off your device in health care facilities when any regulations posted in these areas instruct you to do so. Hospitals or health care facilities may be using equipment that could be sensitive to external RF energy.

Implanted medical devices

Manufacturers of medical devices recommend that a minimum separation of 15.3 centimeters (6 inches) should be maintained between a wireless device and an implanted medical device, such as a pacemaker or implanted cardioverter defibrillator, to avoid potential interference with the medical device. Persons who have such devices should:

- Always keep the wireless device more than 15.3 centimeters (6 inches) from the medical device when the wireless device is turned on.
- Turn the wireless device off immediately if there is any reason to suspect that interference is taking place.
- Read and follow the directions from the manufacturer of their implanted medical device.

If you have any questions about using your wireless device with an implanted medical device, consult your health care provider.

Hearing aids

Some digital wireless devices may interfere with some hearing aids. If interference occurs, consult your service provider.

■ Vehicles

Only qualified personnel should service the device. Faulty service may be dangerous and may invalidate any warranty that may apply to the device. Do not store or carry flammable liquids, gases, or explosive materials in the same compartment as the device, its parts, or accessories.

Using your device while flying in aircraft is prohibited. Switch off your device before boarding an aircraft. The use of wireless teledevices in an aircraft may be dangerous to the operation of the aircraft, disrupt the wireless telephone network, and may be illegal.

■ Potentially explosive environments

Switch off your device when in any area with a potentially explosive atmosphere, and obey all signs and instructions. Potentially explosive atmospheres include areas where you would normally be advised to turn off your vehicle engine. Sparks in such areas could cause an explosion or fire resulting in bodily injury or even

death. Switch off the device at refuelling points such as near gas pumps at service stations. Observe restrictions on the use of radio equipment in fuel depots, storage, and distribution areas; chemical plants; or where blasting operations are in progress. Areas with a potentially explosive atmosphere are often, but not always, clearly marked. They include below deck on boats, chemical transfer or storage facilities and areas where the air contains chemicals or particles such as grain, dust, or metal powders. You should check with the manufacturers of vehicles using liquefied petroleum gas (such as propane or butane) to determine if this device can be safely used in their vicinity.

■ Certification information (SAR)

This device model meets guidelines for exposure to radio waves.

Your device is a radio transmitter and receiver. It is designed not to exceed the limits for exposure to radio waves recommended by international guidelines. These guidelines were developed by the independent scientific organization ICNIRP and include safety margins designed to assure the protection of all persons, regardless of age and health.

The exposure guidelines employ a unit of measurement known as the Specific Absorption Rate or SAR. The SAR limit stated in the ICNIRP guidelines is 2.0 watts/kilogram (W/kg) averaged over 10 grams of tissue. Tests for SAR are conducted using standard operating positions with the device transmitting at its highest certified power level in all tested frequency bands. The actual SAR level of an operating device can be below the maximum value because the device is designed to use only the power required to reach the network. That amount changes depending on a number of factors such as how close you are to a network base station.

SAR values may vary depending on national reporting and testing requirements and the network band. Additional SAR information may be provided under product information at www.nokia.com.

Additional safety information

This device model meets RF exposure guidelines when positioned at least 0.5 centimetres (1/5 inches) away from the body.