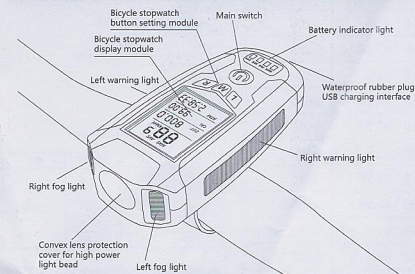
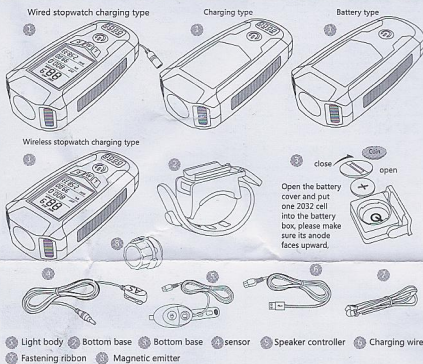


AS0808 User manual

Product description



Parts list/Four optional types



Wired stopwatch charging type

Light + bottom base + speaker controller + wired sensor + magnetic emitter + fastening ribbon + charging wire

Wireless stopwatch charging type

Light + bottom base + speaker controller + wireless sensor + magnetic emitter + fastening ribbon + charging wire

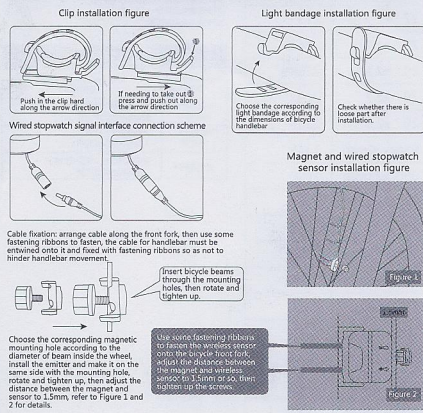
Charging type

Light + bottom base + speaker controller + charging wire

Battery type

Light + bottom base + speaker controller

Installation Instructions



Product Characteristics

Utilize German quality standard and anti-dazzle convex lens similar to automobile dipped headlight, thereby not causing dazzling effect for road passengers and drivers and ensuring personal security. Match with 2 highlight amber fog lights, having strong penetrability, being able to light up the front roads even in foggy or rainy days. 10 COB red light beads on both sides, enabling high visibility of drivers and passengers around, making the passengers and coming bicycle can see each other from a long distance, thereby having the warning effect. Built-in 1200mAh battery with tender function, anti over charging and discharging, having high safety performance and long life cycle up to 3.5-6.5 hours. Split switch design, upper part controlling light modes, bottom part controlling speaker volume, enabling more convenient operation. 4 battery indicator lights, having high accuracy, making you get to know the real-time battery and enjoy a carefree trip. Smart anti-theft alarming mode, being triggered by vibration, being able to prevent and intimidate stealers. 130 high decibel deafening sound, 5 speaker modes optional and surely sure for you: 5 lighting modes, 300 lumens output, lighting up the road to your home.

Stopwatch function descriptions

Max speed/Max riding speed
Average speed (Average riding speed 0.0-99.9)
Speed (current riding speed)
Single trip mileage (single riding mileage)
Riding time (single riding time)
Total mileage (total mileage 0.000-99999.999 kilometers/miles)
Calories (heat consumed 0.0-99999.9)
LCD night light (long press M button for 3 seconds to let on/off, press again to turn it off)
Fat (fat consumed)
Temperature (ambient temperature)
Stopwatch

Time mode (12H/24H)
Hibernation mode (hibernation initiated if no signal for 5 minutes, only time and time symbol displayed)
Km/Mile (kilometers/mile setting)
Maintenance reminder function
Refuel reminder function
Low-battery reminder function (flashing reminder if voltage lower than 2.5V)
The circumference setting
Total mileage initial setting
Total riding time initial setting
Riding data sampling function
Wired/Wireless optional
Chinese/English

How to reset the parameters

Press L and R buttons at the same time for more than 3 seconds to set various parameters (mileage, unit, wheel radius, weight, maintenance value)
Setting procedures:
1. Enter mileage unit setting, the unit is kilometer by default, use R button to switch between kilometer and mile, use M button to confirm.
2. Enter tire circumference setting, value being 2060 by default (2060mm is the tire circumference), the numbers are in flashing status, then set from left to right, use R button to change the numbers and M button to confirm.
3. Enter weight setting, confirm its unit first, value being 065 by default, the character K becomes flashing (K is unit for kilogram), press R button to switch to L (L stands for pound, 65 kilograms equal to 143.3 pounds), press M button to set from left to right, use R button to change the numbers and M button to confirm.
4. Enter maintenance setting, value being 200 by default, press R button to switch among 4 values 200, 400, 600 and 800, use M button to confirm, the initial setting is already finished.
If intending to restore to restore, long press L and R buttons for 3 seconds to enter resetting, the operation procedures same as the aforementioned.

Mode Descriptions

Total mileage mode

This mode displays average speed, total mileage, maintenance time, stopwatch.

How to set total mileage zero clearing

Press L button to make the total mileage character flash, long press R button for more than 3 seconds, then set from left to right, use R button to set and L button to confirm. The setting range is 0.000 to 99999.999, zero clearing will happen automatically if exceeding the range.

How to set temperature unit

Press L button to make the total mileage character flash, then press L button once again to trigger temperature flashing, long press R button for more than 3 seconds to make "degree centigrade" character flash, then press R button again to change the unit from Centigrade to Fahrenheit, use M button to confirm.

How to set time

Press L button to make the time symbol flash, then long press R button to switch between 24H and 12H, press R button again to confirm; press L button to set time, then press R button again to change time numbers, use L button to switch among hour, minute and second, use R button to set and M button to confirm.

How to switch to stopwatch

In the total mileage mode, press R button to switch to stopwatch, press L button to initiate. Press L button to pause, press L again for zero clearing and restart; press R button to switch from stopwatch to time mode.

Single trip mode

This mode displays max speed, single trip, calories, riding time.
How to switch calories and fat
Press R button, calorie or fat functions will switch to each other automatically.

How to zero clear all data

Long press L button for more than 3 seconds, max speed, single trip, calories, riding time will zero clear automatically.

Speed (current riding speed)

Speed can only be shown when riding, the topmost speed character flashes with the accuracy of 0.1 kilometer per hour, the speed range is 0.00-99.9 kilometers per hour or 0.00-99.9 miles per hour; if not in riding status, the screen shows the max speed or average speed.

LCD night light

In 24H time mode, set with 17:00-07:00, press any button, the back light will be on for 4 seconds; long press M button for more than 3 seconds under any time setting, the back light will be on always; also long press M button for more than 3 seconds to turn off the back light.

Cancellation of maintenance symbol

When the riding distance exceeds the set maintenance mileage value, the maintenance mileage character will flash, long press R button for more than 3 seconds under any mode to cancel the reminder.

Power-saving mode

If there is no input signal or button pressing after 5 seconds, the hibernation mode will start, only time and time symbol are displayed.

Low-battery reminder function

When the battery voltage is lower than 2.5V, the battery symbol will flash to remind that the battery needs to be replaced or charged.

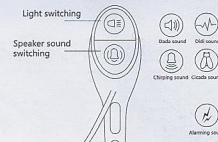
Wheel specification	Circumference (mm)
16" x1.5"	1206
16" x1.95"	1253
16" x2.0"	1257
20" x1.25"	1450
20" x1.35"	1460
20" x1.5"	1490
20" x1.75"	1515
20" x1.95"	1565
20" x1-1/8"	1545
20" x1-3/8"	1615
20" x1-1/4"	1618
22" x1-3/8"	1770
22" x1-1/2"	1785
24" x1(520)"	1753
24" x3/4 tubular	1785
24" x1-1/8"	1795
24" x1.75"	1890
24" x1-1/4"	1905
24" x1.9/1.95"	1916
24" x2.00"	1925
24" x2.125"	1965
26" x1.0"	1913
26" x1.25"	1953
26" x1.5"	1985
26" x1.75"	2035
26" x1.9/1.95"	2055
26" x2.0"	2074
26" x2.1"	2095
26" x2.25"	2115
26" x2.3"	2135
27" x1-1/8"	2155
27" x1-1/4"	2161
29" x2.1"	2288
29" x2.2"	2298
29" x2.3"	2326
650cx20mm	1945
650cx23mm	1990
700c tubular	2130
700cx20mm	2074
700cx23mm	2105
700cx25mm	2124
700cx28mm	2136
700cx30mm	2145
700cx32mm	2155
700cx35mm	2168
700cx38mm	2180

Wired stopwatch/wireless stopwatch parameters

Mode:AS0808
Size:101.5(L)x49.5(W)x24.5(H)
Led: XPG+C08+2835X2 PCS
Main light/Fog light: 300 lumens/30 lumens
Battery: 1200mAh polymer lithium battery (with fender)
Charging cycles: 500+ times
Sound mode: 5 types
Sound decibel:130db
Material: ABS+GPPS
Charging time: about 2.5 hours
Waterproofing grade: 4 (anti-drip)
Battery indicator light brightness: 100%-75%-50%-25%

Mode	Lumen	Battery time	Mode
Gear one	300	4.5h	
Gear two	30	6.5h	
Gear three	100	6h	2.5h
Gear four	300	3.5h	
Gear five	100	5.5h	

Speaker with 5 sounds



How to install speaker wire
There is a speaker charging hole and a speaker wire connector hole at the tall part of bicycle light.
How to switch among speaker sound modes
Long press the speaker switch for over 2 seconds.

How to initiate smart anti-theft alarming mode

Long press the main button for over 3 seconds, you will hear the didi sound for 4 times, 5 seconds later, if the bicycle is subject to some extent of vibration, it will initiate the alarming sound for 15 seconds, if being vibrated again, it will sound with the second kind of alarming sound; long press the main switch to turn off the alarming sound function.

Charging description

Micro USB charging is applied, it also supports cell phone power supply adapter, vehicle-mountable USB interface, computer USB interface and portable power bank. You only need to open the waterproof rubber plug at its tail, connect with the charging wire, the charging is fully done if all the 4 battery indicator lights are on.

Notes for light usage

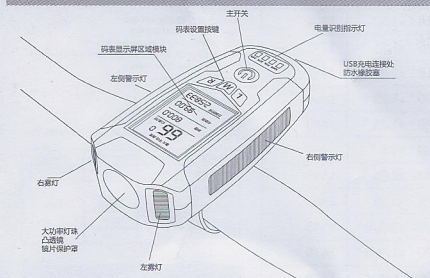
Please don't irradiate eyes.
Don't soak it in water.
Avoid hard impact.
It is recommended to charge once a month if not using for a long time.
Keep off children contact.
Please don't place this product near fire or high heat source.
Please shut down the power supply if not using.
Please don't disassemble if not being professionals.

Please don't disassemble if not being professionals.

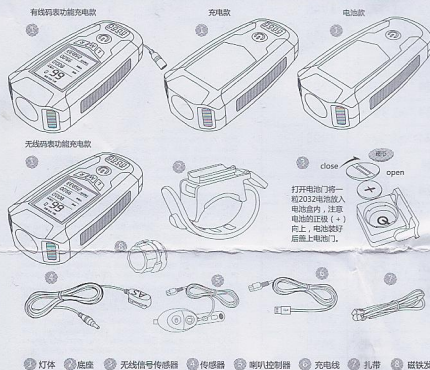
Failure	Failure causes
Speed indicator always being zero when riding	Incorrect distance or angle between magnetic emitter and sensor
Speed indicator always being zero when riding	Incorrect parameter setting (bicycle wheel circumference)
Screen blackout	Too long exposure to strong sunlight, it will restore to normal if put in shadow or dark area for a period.

AS0808用户手册

产品解析



零件清单/四款供电选择



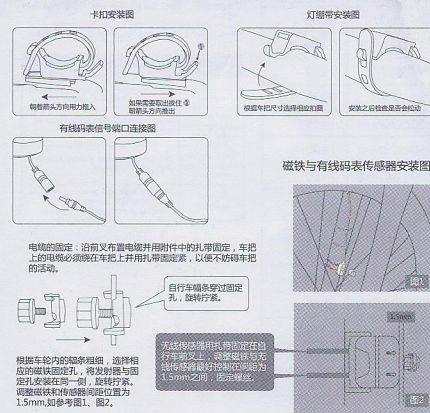
有线供电按钮充电款
灯+底座+喇叭控制器+有线传感器+磁铁发射器+扎带+充电线

无线供电按钮充电款
灯+底座+喇叭控制器+无线传感器+磁铁发射器+扎带+充电线

充电款
灯+底座+喇叭控制器+充电线

电池款
灯+底座+喇叭控制器

安装方法



产品特点

参考国家标准，防夜光污染，类似汽车的尾灯光，不会对周围的行人和驾驶员造成一定的影响，保障人身安全。
骑行时亮度可调，具有省电模式，各档亮度可调，白天、晴天可调到最高亮度。
两灯 10 颗 COB 红外灯珠，提高驾驶员与周围交通参与者间的能见度，使车友和行人在较远处发现对方，起到警示作用。
内置 1200 毫安带保护板电池，可充放电，安全性高，使用寿命可达 3.5-6.5 小时。
全新设计：上方为转向灯集成，下方控制喇叭鸣笛，操作更便捷。
距离报警指示灯，声音响亮，实时掌握当前电量状态，出行无忧。
智能防碰撞报警系统，震动报警，防止偷车贼，起到震慑作用。
130 高分贝声音，震撼鼓噪，五种喇叭模式，总有一款适合您。五种灯光模式，300 流明输出，照亮您周围的道路。

码表功能说明

码表功能说明

最大速度 (最大骑行速度)
平均速度 (平均骑行速度 0.0-99.9)
速度 (当前骑行速度)
最大里程 (单次骑行里程)
行程时间 (单次骑行时间)
总里程 (总里程 0.000-99999 公里/英里)
里程 (当前骑行里程 0.0-999.9)
LCM 显示 (按 M 键 3 秒有亮，再次按下熄灭)
胎压 (消耗胎压)
胎压 (当前环境温度)
温度

8Hz (12H/24H)
休眠模式 (五分钟无信号进入休眠，显示时钟和指针符号)
Km/Mile (公里/英里设置)
保持骑行时间
加油提醒功能
低电量提醒功能 (电压低于 2.5V 闪烁报警)
夜间骑行模式
公里/英里切换
累计骑行时间初始设置
行车数据采样功能
可選擇有线/无线
中文/英文

如何进行参数设置

同时按住 L 和 R 键 3 秒以上，可对各参数 (里程 单位 体重 保养值) 进行设定。
1. 进入里程单位设置，默认公里，R 键设置速度/英里，M 键确认。
2. 进入公里/英里单位设置，默认 2060 (2060 意思是车轮周长为 2060 毫米)，数字处于闪烁状态，从左到右依次进行设置，R 键改变数字，M 键确认。
3. 进入体重单位设置，默认公斤，M 键确认，R 键切换为磅/公斤单位，R 键可以切换到 LL 为磅单位，65 公斤 (143.3 磅)，按 M 键确定，从左到右依次进行设置，R 键改变数字，M 键确认。
4. 进入保养提醒设置，默认 200，按 R 键可以切换 200-400-600-800 四个值，M 键确认完成初始设置。
长按上键和 R 键三秒钟回到重新设置时状态，操作步骤和上方图统一。

模式说明

在总里程模式下
该模式下会显示平均速度、总里程、时间、秒表。
如何设置总里程清零
按 L 键，此时总里程闪烁，按住 R 键 3 秒以上，从左侧开始设置，R 键设置，M 键确认总里程 (0.000-99999)，然后返回自动。
如何设置温度单位
按 L 键，此时总里程闪烁，再按 L 键一下，触发温度闪烁，然后长按 R 键三秒以上，进入温度闪烁状态，再按 R 键，把单位切换成摄氏/华氏度，按 M 键确认。
如何设置时间
按 L 键，找到闹钟符号闪烁状态，长按 R 键，进行 24/12 时，再按 R 键选择，在 L 键进行闹钟设置，再按 R 键进行更改闹钟数字，L 键调整分钟，R 键设置，M 键确认。
如何切换秒表功能
在总里程模式下，按 R 键进行切换到秒表，按 L 键开启功能，如果报警声按 L 键，暂时停止计时，清零重新开始，秒表触发时可以对 R 键切换到闹钟模式。

在单程模式下

该模式下会显示最大速度、单程、卡路里、骑行时间。
该模式下卡路里和脂肪。
按 R 键，此时卡路里和脂肪功能会自动切换成功。
如图中所有数据。
常按 L 键 3 秒以上，最大速度、单程、卡路里、骑行时间自动清零。
速度 (当前车速)
只有在骑行时，才会显示速度出来，最上边的数字单位为公里/小时，精度为 0.1 公里/小时；速度范围显示 (0.00-99.9 公里/小时) 或者 (0.00-99.9 英里/小时)，不骑行时屏幕显示最大速度或者平均速度数字。

LCD 背光

在时钟模式下设置或 24 小时制的 17:00-07:00，按动任何按键，背光都会亮 4 秒，在夜间骑行按 M 键 3 秒以上，背光长亮，如果再次按亮，也是长按 M 键 3 秒以上。

保养符号的取消

当运动数据超过保养提醒设置时，保养提醒符号 闪烁，在任意模式下长按 R 键 3 秒上即可消除保养提醒符号 显示。

省电模式

5 分钟后无骑行信号输入或者不触动任何按键进入休眠状态时，仅显示时钟和指针符号 低电量提醒功能。
当检测到电池电压低于 2.5V 时，电池符号会闪烁提示，提醒时请及时更换电池或者进行充电。

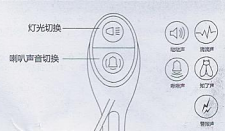
车轮规格	周长 (mm)
16" x1.5"	1206
16" x1.95"	1253
16" x2.0"	1257
20" x1.25"	1450
20" x1.35"	1460
20" x1.5"	1490
20" x1.75"	1515
20" x1.95"	1565
20" x1-1/8"	1545
20" x1-3/8"	1615
20" x1-1/4"	1618
22" x1-3/8"	1770
22" x1-1/2"	1785
24" x1(520)	1753
24" x3/4 tubular	1785
24" x1-1/8"	1795
24" x1.75"	1890
24" x1-1/4"	1905
24" x19" /195"	1916
24" x2.00"	1925
24" x2.125"	1965
26" x1.25"	1913
26" x1.5"	1953
26" x1.75"	2035
26" x1.9" /195"	2055
26" x2.0"	2074
26" x2.1"	2095
26" x2.25"	2115
26" x2.3"	2135
27" x1-1/8"	2155
27" x1-1/4"	2161
29" x2.1"	2288
29" x2.2"	2298
29" x2.3"	2326
650cx20mm	1945
650cx23mm	1990
700c tubular	2130
700cx20mm	2074
700cx23mm	2105
700cx25mm	2124
700cx28mm	2136
700cx30mm	2145
700cx32mm	2155
700cx35mm	2168
700cx38mm	2180

有线码表/无线码表参数

货号: AS0808
尺寸: 113x64x49.5mm(X24.5mm)
灯珠: XPG+COB+2835X2颗
主灯/尾灯: 300流明/30流明
电池: 1200毫安聚合物锂电池 (带保护板)
充电效率: 5000mAh
声音模式: 3种
声音分贝数: 130分贝
续航: ABS+GPS
充电时间: 约2.5小时
防水等级: 4级 (防小雨)
电量指示灯亮度: 100%-75%-50%-25%

模式	亮度	续航时间	模式
第一档	300	4.5小时	2.5小时
第二档	30	6.5小时	
第三档	100	6小时	
第四档	300	3.5小时	
第五档	100	5.5小时	

喇叭五种声音



如何安装喇叭线
车灯尾部有一个USB充电孔，喇叭线连接接口。
如何切换喇叭声音模式
长按喇叭开关2秒以上。

如何开启智能防盗报警模式

长按主开关3秒以上，会听到滴滴滴滴声，五秒之后，当车子亦即一步回到初始的。报警功能启动成功。持续15秒，当再次触发报警时发出三种报警声音，如需要关闭功能，长按主开关2秒取消。

充电说明

采用 MICRO USB 充电，支持手机电源适配器，车载USB接口，电脑USB接口，充电器，您只需打开磁钢头橡胶盖，连接充电线，当电量指示灯闪烁蓝色，表示充电完成。

使用车灯须知

请勿长时间照射
避免强光直射
避免直视屏幕
长期不使用建议1个月充一次电
避免长时间暴晒
请勿将本产品置于高温或高热源附近
不使用请关闭电源
非专业人士请勿拆卸

码表模块故障及其原因

故障	故障原因
行驶时间计 始为 0	磁铁发射器与传感器距离 或者没有安装牢固
速度显示 不正确 (自行车的车轮周长)	设置的参数不正确 (自行车的车轮周长)
显示器黑屏	屏幕时间过长，放置在阴暗处一 段时间后恢复正常