

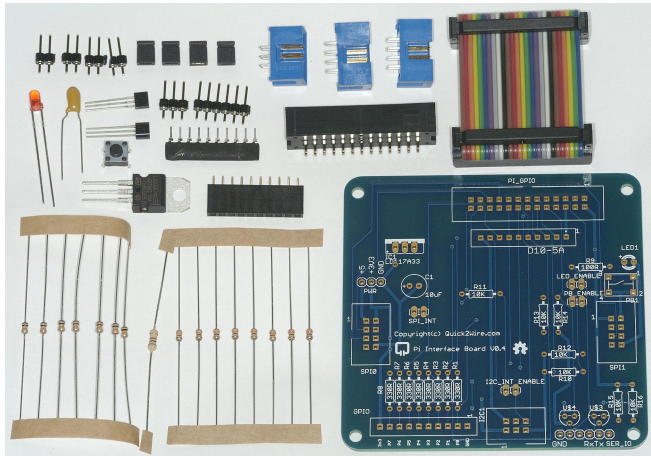


Pi Interface Board Review Quick2Wire

The Quick2Wire Pi Interface Board is a new interface board for the Raspberry Pi which will go on sale in February 2013.

I managed to get hold of one of the beta kits for review and also had a chat with Romilly Cocking, Director of Quick2Wire.

So, What's In The Kit?



- 1 x printed circuit board (PCB)
- 1 x multi-coloured ribbon cable
- 4 x jumpers
- 11 x assorted headers
- 2 x transistors (FETs)
- 1 x tantalum capacitor
- 1 x light emitting diode (LED)
- 1 x push-button
- 1 x voltage regulator (3V3)
- 1 x diode array
- 16 x resistors

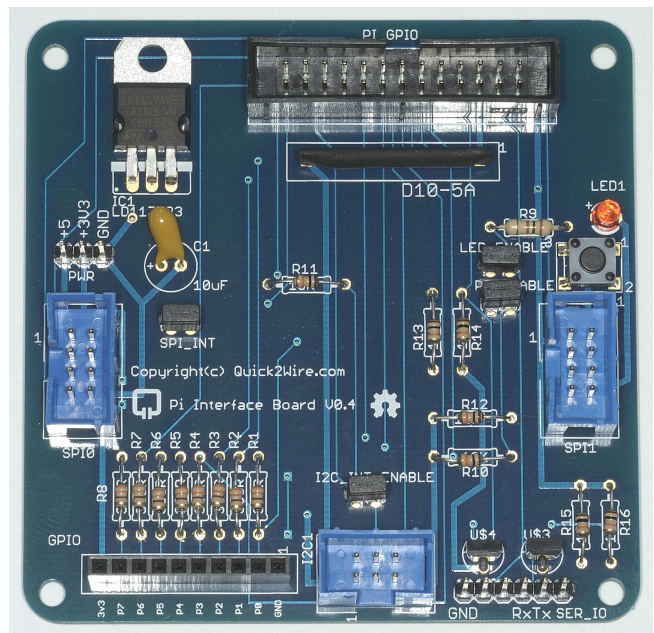
Interface Build

The build was a pleasure. I'd been teaching my son to solder the day before, so I'd left the leaded solder out and the leaded bit on the iron. I decided to go with those for this build.

The instructions are clear and the build is quite easy. You could probably build it without the instructions because the excellent silk screen layout, printed on the

board, shows you what goes where. The only potential pitfalls are the orientation of the diode array and tantalum capacitor. They both have to be the right way round. The instructions explain how to make that happen.

It took me about 20 minutes to do all the resistors (I was fussy about aligning them). Overall, it took 53 minutes from start to finish



and it was an enjoyable experience. This is what it looks like finished.

Software Installation

The next step was to fully update Raspbian and install some software to test the interface. The instructions were excellent and software installation worked flawlessly. The longest part was doing the Raspbian package updates (using `sudo apt-get update` and `sudo apt-get upgrade`).

“The thing which stands out here, compared