

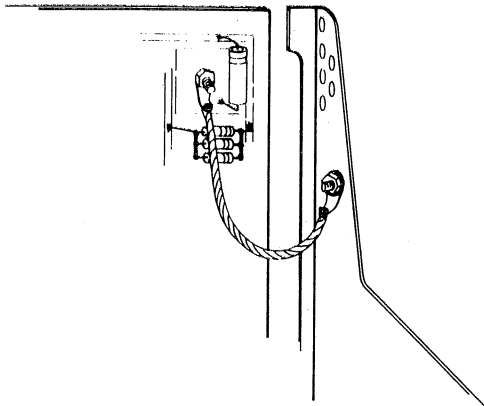
## 8800 GROUNDING MODIFICATION

There are several grounding straps to be added between various members of the chassis and some of the PC boards.

There are two sizes of braided wire provided in your kit for making these connections, 1/8 inch and 1/4 inch. The 1/4 inch size is used along the edge of the power supply board and the 1/8 inch is used to make all other connections.

The first connection is to be made between the display/control board and the chassis.

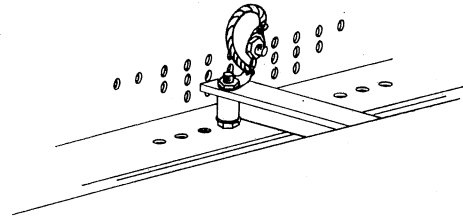
- ( ) Cut a length of the 1/8 inch braid approximately 3 inches and solder a solder lug in place on each end.
- ( ) Referring to the drawing below, attach the braid between the 7805 mounting screw on the back side of the display/control board and the chassis as shown.



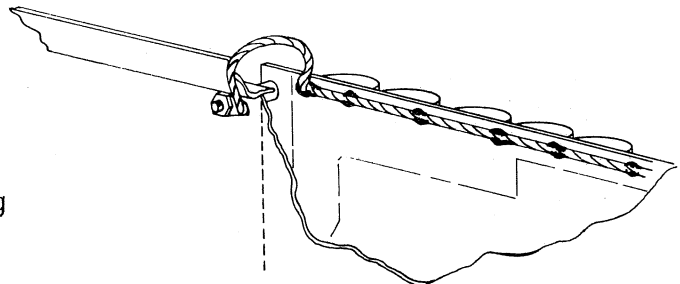
**NOTE:** At any point where a connection is made to the chassis, first rub the area around the connection point with sandpaper or some other abrasive to remove the anodizing.

This connection should be insulated using heat-shrink or some other such tubing.

- ( ) Prepare another length of 1/8 inch braid in exactly the same manner as the first piece.
- ( ) Connect this braid between the card rail towards the back of the unit on the side opposite the transformers and the chassis as shown in the drawing below.



- ( ) The 1/4 inch braid is to be soldered directly to the PC land on the bottom (non silk-screened) side of the power supply board. Solder this braid in place along its entire length between the negative side of C1 and the positive side of C14. (see drawing below)
- ( ) Prepare a 4 inch length of 1/8 inch braid by attaching a solder lug to one end.
- ( ) Solder the end opposite the lug on the 4 inch length to the end of the 1/4 inch braid beneath capacitor C1 as shown in the drawing below. The end of the 1/8 inch braid with the solder lug will be attached to the bottom side of the cross member with the same screw which mounts the closest corner of the power supply board.



- ( ) Prepare another 3 inch length of 1/8 inch braid by attaching solder lugs to each end.
- ( ) Connect this length of braid between the cross member on the side opposite the transformers and the chassis as shown in the drawing below.

**NOTE:** The drawing below also shows the 4 inch length of braid from the power supply board properly attached to the cross member as previously instructed.

- ( ) Prepare a 3 inch length of 1/8 inch braid for each of the expander boards in your kit by attaching a solder lug to one end.
- ( ) Connect these wires between the card rail and the expander boards as shown in the drawing below. The end of the braid opposite the lug should be soldered directly to the land on the expander board which runs along the edge connecting pins 50 and 100 of each connector. Be very careful not to create any solder bridges when making this connection.

